



“YOUR SUPPORT STRENGTHENS OUR COMMUNITY”

Annual Report

2012



HISTORY OF EYRE PENINSULA COMMUNITY FOUNDATION

2002 - The Eyre Regional Development Board started research into feasibility of a community foundation on the EP

2004 - Incorporated Body formed and tax deductibility status obtained

2008 – New board formed. 1st Board meeting held.

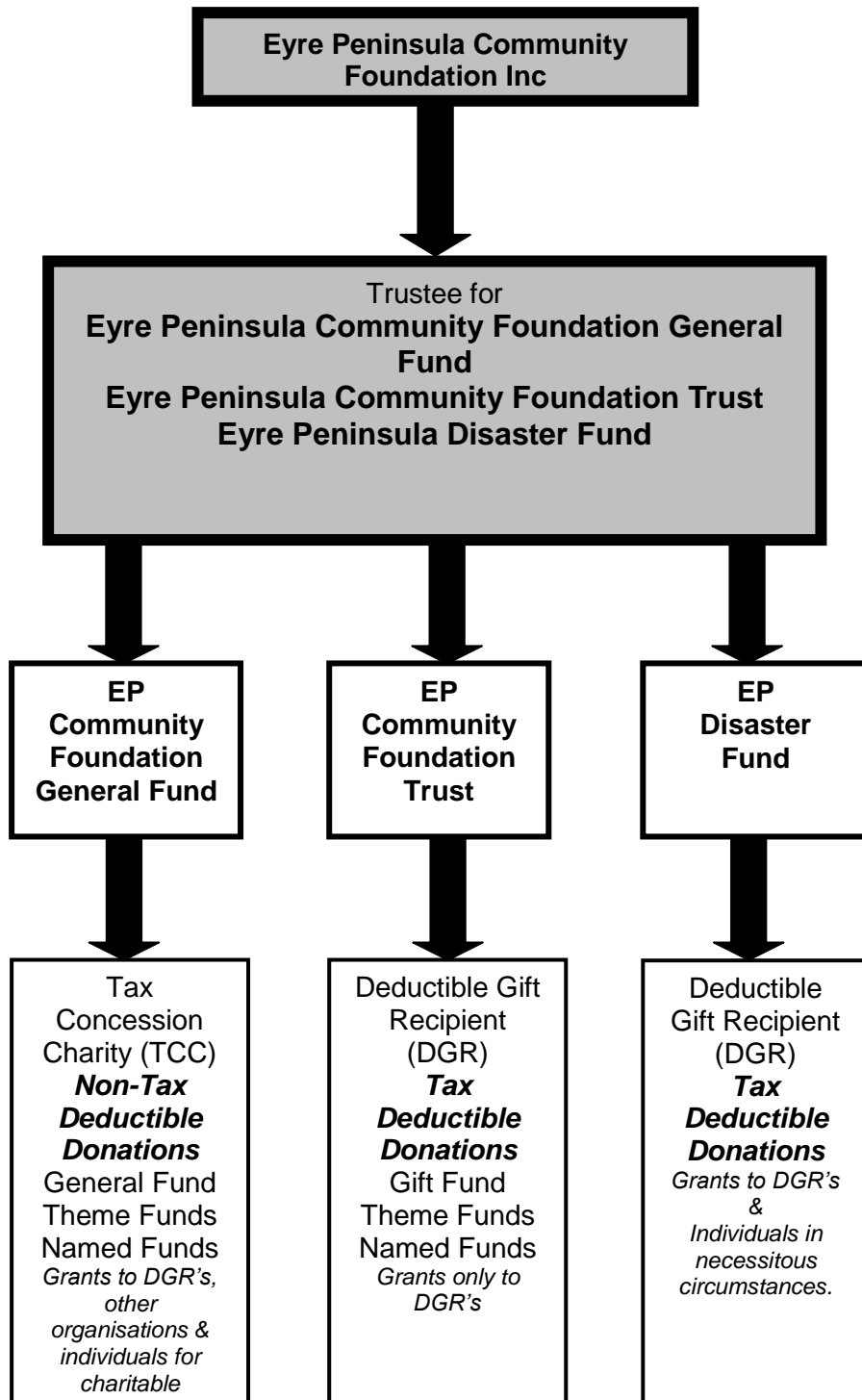
2009 – Strategic plan, governance manual, marketing materials, policies and procedures created

2010 – LAUNCHED

MISSION

The Eyre Peninsula Community Foundation enables the people of the Eyre Peninsula to proactively contribute to the long term benefit of our region by building community endowment, addressing local needs through charitable grant-making and encouraging philanthropy

“By 2015 the Eyre Peninsula Community Foundation is the premier philanthropic organisation on the Eyre Peninsula with a Public Fund of over \$3 million”





CHAIRMAN'S REPORT

I have pleasure in presenting my report on the last financial year's operation of the EP Community Foundation (EPCF).

This year is our second full year of operation following our launch events in 2010. It has been a rigorous year in an economic climate that is not conducive to attracting benevolent behaviour.

Much of our time this year has been spent on completing the house and land package that we commenced last year. This has been a bigger project than we all anticipated. However, the end product produced by Keith Daniels Homes has been exceptional.

The fruits of this project will not show in our financial results until next year as the property only sold in September 2012 thanks to the efforts of Steve Kemp and his office.

The final result of the project is that the Foundation has managed to bank approximately \$150,000 from the project which is a good boost to our funds.

The great contribution from Keith Daniels Homes, Sarin Group, Kemp Real Estate and the many tradesmen are truly appreciated.

As you are probably all aware we run three different funds under the Foundation banner. These are the EPCF Trust Fund, the EPCF General Fund and the EPCF Disaster Fund.

At the commencement of this year we had \$51,288 in the 3 funds and as at 30th June 2012 this had increased by \$64,443 to \$115,731.

Two large contributors made our funds increase possible. The first was the Port Lincoln Rotary club with a donation of \$25,000 and the second was the Cummins Community Bendigo Bank for \$25,000. Both will have named funds through which they can ensure that the funds are used for their desired purposes.

The balance of the increase was made up of a number of other donations from Port Lincoln Lions, Unity Op Shop, Gary Plane Electrical, Neville Starke, Peter Davis, Sue Chase, Tumby Bay District Council, Peter Treloar, Port Lincoln Council and various Board members.

As part of our operations we also run an administration account for meeting our overhead costs. At this stage management fees are only a small percentage of our income to this account so we need to meet our overhead cost from elsewhere.

The Regional Development Australia Whyalla and Eyre Peninsula office have continued to provide invaluable support and during this year have provided not only office facilities but a further grant of \$45,000 to assist with our funding. Without this assistance we would not be able to survive.

Faye Davis has continued in her role as our Marketing and Fundraising Coordinator and has managed to keep herself very busy during this last year following up donors and leads for funds. Thanks for the efforts Faye.



CHAIRMAN'S REPORT Cont.

At the start of the school year we again administered the "back to school" vouchers which were distributed to needy children across the Eyre Peninsula. These \$50 vouchers are greatly appreciated by the recipients.

The Foundation had a presence at the Cleve Field Days and I am sure that was worthwhile to continue to educate the public about the work and operation of the Foundation.

Most recently Faye has been working with BP and I am pleased to report that after doing their due diligence on the Foundation chose us to be the distributor of funds for them to various projects across the Peninsula. The result of this partnership will not show until the current year. However, it is exciting to be chosen by a multi-national company for this function.

Faye is to be congratulated on her persistence in putting this together. She has also continued to chase other avenues and we hope to see results from them in the future.

The Smoky Bay Jetty Restoration committee who obtained funding, with our assistance, through FRRR (Foundation for Rural and Regional Renewal) also completed their project this year.

An issue of concern to me is that we have lost a number of board members during this year. They are all busy people so I understand that at times other things take priority. All have been good contributors and I am sorry to lose them. Thanks to each of Damon Edmonds, Phil Lynch, Kate Clarke (our untiring secretary) and Jane Lowe.

On the positive we have also had some new faces join us in Liz Penfold, Kamron Clark and Jeff Poole. Each has some refreshing new ideas and enthusiasm which will add greatly to the board operations.

I must also thank Wendy Holman who has stepped up to undertake the secretarial role when Kate took up her assignment interstate.

Having made the above comments I also advised the Board some time ago that I would step down as chairman at this AGM. I will still continue to handle the financial reports but find my time limited to do justice to the chairman's role.

If you are aware of anyone wishing to join the Board please let us know as we also have some 4 vacancies to fill.

I wish you all the best with the AGM and apologise that I will not be present.

I hope that next year we can say we are much closer to the initial target of obtaining \$1m in funds. There are some good ideas as to how this can be done.

Glenn Karutz
Chairman



BOARD OF DIRECTORS

Glenn Karutz - Chairman

Appointed 17 November 2008

Glenn was raised on a farming property at Wirrulla on the Eyre Peninsula and left the property in 1970 to commence working in a chartered accounting firm. He gained a Bachelor of Arts in Accounting and later became a Chartered Accountant. He spent his career providing business advice for small to medium businesses in a variety of business sectors. Glenn became managing partner of both the Adelaide, Sydney and Port Lincoln offices of his firm and spent over 20 years of his career before recently retiring in Port Lincoln.

He is actively involved in the community being a past member of the Regional Development Australia Whyalla and EP Board; he is a past President and current Member of Rotary, past Director of the Port Lincoln Bendigo Community Bank and past Member of the board of management at Ravendale Community Sports Centre. Glenn is a life member of Apex Clubs Australia, Tasman Football Club and a Paul Harris Fellow of Rotary. He is also a Justice of the Peace.

Kate Clarke – Director - Secretary

Appointed 17 November 2008 – Resigned 12 July 2012

Kate has lived and worked on Eyre Peninsula for over 25 years in the health, primary industry and environment sectors. She was previously the General Manager of the Eyre Peninsula Natural Resources Management Board and Eyre Peninsula Catchment Water Management Board. She has extensive experience in consultation and community engagement across the whole of the region in addition to membership and participation of a number of state and national committees. Kate is a graduate of the Institute of Company Directors, a fellow of the Australian Rural Leaders Foundation and has qualifications in Business Administration, Applied Science and Nursing.

Wendy Holman – Director – Acting Secretary

Appointed 18 February 2010

Wendy, with her family, owns and operates a broad-acre cropping and sheep enterprise at Cockaleechee, north east of Cummins. Wendy's career as a teacher and teacher librarian spanned 25 years. Since retiring from full time work she volunteers her time in support of community projects and maintaining services in the Cummins and Cockaleechee districts.

Over the past decade, Wendy has invested her time as a Director and past Secretary of the Cummins Financial Services which manages the Cummins District Community Bank, as well as a Director and Chairperson on the Lower Eyre Health Services Board for 5 years and inaugural Presiding Member of the Lower Eyre Health Advisory Council for 2 years. Further community involvement has been with the Cummins District Enterprise Committee, as past Chairperson and continuing as a proactive member, and elected as Councillor on the District Council of Lower Eyre Peninsula in 2010. In 2001, Wendy was awarded South Australian Citizen of the Year.



BOARD OF DIRECTORS

Damon Edmunds - Director

Appointed 17 November 2008 – Resigned 1 May 2012

Damon is the managing director of his family owned seafood company in Streaky Bay. They harvest, export and process seafood and are a large employer in the local area. Damon regularly travels overseas and interstate for marketing and business development opportunities. He brings to his director role a vast knowledge and skills in financial management, marketing, and relationship building. His volunteer roles include past secretary and current treasurer of Abalone Industry Association of SA; Western zone representative on various committees advising government on the Abalone Industry. He has been a Councillor representing District Council of Streaky Bay and member of the Eyre Peninsula Natural Resource Management Board, Eyre Peninsula Tourism Association and Eyre Regional Development Board. He is also a committee member and President of numerous local sporting bodies, and Eyre regional bodies.

Marie Lally AM - Director

Appointed 22 October 2009

Marie with her husband Kevin have farmed their properties in the Lock , Kopi, Warramboe districts for almost 40 years before retiring to Tumby Bay in 2007. Marie's dedication to her community and the agriculture industry is evident in the long list of roles she has had on boards and panels over the years, e.g., The SA Arts Council for the EP Region; the Lock Health and Welfare Community Board; the SA Country Women's Association going on to be the State President and later National President serving from 2000-2003. Marie was a member of the Rural Women's advisory Council to the Deputy Prime Minister. She is currently the SA representative on the National Rural Health Alliance Friends Advisory Committee, Member of the Lower Eyre Health Advisory Council and President of the Tumby Bay Hospital and Uringa Auxiliary. In 2008 Marie became a director on the Australian Year of the Farmer Ltd.

Marie has been awarded Citizen of the Year for the Elliston District Council in 1998; the Centenary Medal of Federation of Australia in 2003, for outstanding service to women in Rural Australia and in 2004 Marie was appointed a Member in the General Division of the Order of Australia, AM.

Phillip (Phil) Lynch – Director

Appointed 22 October 2009 – Resigned 2 January 2012

Phil is the Chief Executive of Alliance One Credit Union and is based at their Head Office in Whyalla. He has been in this role for over 20 years and has in excess of 30 years experience in the Financial Services Industry.

Being born in Wollongong N.S.W. and arriving in Whyalla in 1964, Phil states that he “was not born but bred in Whyalla” and the Eyre Peninsula is home to him and his family.

Through sport and his profession Phil has travelled extensively throughout the Eyre Peninsula and has a solid understanding of the needs of the communities and people in the region. From this experience Phil sees the need for a community foundation that will be available to fund special needs of individuals and groups within our communities.

Phil is a Graduate of the Australian Institute of Company Directors (GAICD), a Fellow of the Financial Institute of Australia (Finsia) and a Fellow of the Australian Mutual Institute (FAMI).



BOARD OF DIRECTORS

Stephen (Steve) Errock - Director – Acting Deputy Chair

Appointed 28 October 2010

After completing his schooling in Port Lincoln, Steve trained as a teacher and has worked across South Australia, from the North West to Far North, Murraylands, Riverland and South East. Steve has taught in 9 schools and been Principal of 3, returning to Port Lincoln during 2009. He is currently Principal of Port Neill Primary School. During almost 30 years working in education Steve also worked as a Field Officer for the South Australian Institute of Teachers and Australian Education Union for 13 years, representing members in the Riverland, Murraylands and South East regions. He was an inaugural member of the Limestone Coast Area Consultative Committee, advising the Australian Government on local economic development issues for 7 years, and inaugural member of the Greater Green Triangle Economic Development Board for 5 years which looked at cross border issues affecting business in Western Victoria and the Limestone Coast of SA. He was a member of the steering committee of the Limestone Coast ACC that established the Stand Like Stone Foundation for the region. Steve served for 8 years as a Board Member and Chairman of the Board of Mainstreet Community Theatre Company, 6 years as a Board Member and Chairman of Lifeline South East. Steve had a distinguished 19 year career as a member of Apex, serving 3 years as the SA/NT Board District Governor and Citizenship Director. He also prepared, planned and conducted an Apex National Service project to support the Royal Flying Doctor Service. Steve is a Life Member of Apex Australia

Liz Penfold

Appointed 7 February 2012

I grew up on a farm at Lock and worked in an accounting practice with clients from all the various industry sectors across Eyre Peninsula. I was the Member for the State Electorate of Flinders for 16 years, from 1993 to 2010. During which time I was Shadow Minister for Small Business, Regional Development and Consumer Affairs. During which time I was also a Member of Transport, Health, Education, Regional Development, Primary Industries, Mining, Tourism and Small Business Backbench Committees. I have lobbied at both state and federal level for the delivery of adequate services across education, health and communication in the region. I have been a school teacher at Tumby Bay and am also a Graduate Member of the Australian Institute of Company Directors.

Jeff Poole

Appointed 7 February 2012

Jeff with his wife owned and operated a Landscaping and Gardening business and Computer and IT business in the Port Lincoln area for a period of 15 years. In more recent year Jeff has been employed by TafeSA as a Lecturer in the Aquaculture sub-program of Primary and Allied Industries Program. He has been a volunteer member of the SA Country Fire Service for 24 years serving as 1st Lieutenant for 20 years, Administration Officer Training Officer and Communication Officer also at Brigade level and various roles at Group level.

Jeff is a Justice of the Peace since 1986 and has a Science Degree in Earth Science (Geology).

Jeff brings to the Foundation a vast knowledge of the Eyre Peninsula aquaculture industry, mining, employment opportunities, emergency services and past experience as a small business owner.



BOARD OF DIRECTORS

Kamron Clark

Appointed 17 Nov 2011

Since 2005 I have owned the Port Lincoln Budget Rent a Car franchise growing the business from 8 vehicles to a fleet of 21 with 2 employees.

I have been an active member of the Port Lincoln Apex Club from 2002 to 2009 holding positions of Club Secretary, Treasurer and President. In 2007 I held the position of Convention Chairman on the Apex National Board and we held the national convention in Port Lincoln in 2007 hosting 200 Apexians and their families. I was a member of the EP Bushfire Charitable Funds Committee whose responsibility was to disseminate funds both small and large to individual and groups across the fire effected area through a methodical and accountable process.

Our community across the region is important to me. It pleases me to be able to contribute through the Foundation by way of being a Board Member and to raise the profile and value of the future benefits of the Foundation to the community as it evolves.

Jane Lowe – Director

Appointed 24 February 2011

Jane joined MGA Insurance, Port Lincoln branch in late 2010 as the owner and manager of the business.

Jane lived and worked in Ceduna for 17 years before recently moving to Port Lincoln.

Previously Jane worked in the field of regional development for 11 years based in Ceduna as Development Manager with the Eyre Regional Development Board Inc. In this role Jane had management responsibility for large and small infrastructure, Aboriginal, tourism, mining, agriculture and aquaculture development initiatives. A large proportion of her role with the Development Board involved working closely with the local Aboriginal communities in and around Ceduna. From this vast experience Jane brings a demonstrated knowledge and understanding of the Aboriginal communities and culture to the Board.

Previously Jane worked for the Spencer Institute of TAFE in a range programs.

Jane has also been involved in both the thoroughbred and aquaculture industries through family businesses.

She also has a Bachelor of Education. Over the years Jane has been appointed to a number of Ministerial State Committees including: the SA Regional Development Council, the Australian Local Government Association Regional Development and Co-operation committee, Tourism Eyre Peninsula and the Regional Communities Consultative Committee and brings a broad range of practical business and industry experience to the EPCF Board.

Directors Retiring: Jane Lowe



MARKETING & FUNDRAISING COORDINATOR'S REPORT

It has once again been a busy year even though the corpus of funds, has not increased significantly. I have found the greatest challenge to the Foundation has been that we are competing with other not for profit causes which are long standing with historical and emotional connections to communities. We are yet to prove our worth to the community and this will take time to evolve.

I have worked closely with the media this past 12 months to promote the Foundation and educate the community to gain a better understanding of how a foundation works and how it can benefit across the whole of Eyre Peninsula.

On average throughout the year I have worked anything between 16 hours (which I am paid for) and 38 hours (this extra time I donate). My commitment to the Foundation is to see it become self-sustaining. The work involved in the day to day running of the Foundation is complex and very time consuming at times as I implement the necessary administrative activities as they arise. An example of this is the time we held a sausage sizzle and found we needed to register as a Food Handling Business for charitable purposes. Another, are the State Licences required for collecting monies for charitable purposes and also holding an event. Both of these we report on annually. But this will change over time as we integrate these processes into the day to day running of the Foundation.

Our Foundation has been kept informed through Philanthropy Australia and the legal firm Freehills of the Federal Legislative changes and the establishment of the new requirements for Public Ancillary Funds (EPCF Trust Fund). This has been a big task for all concerned and we are continually monitoring our structure and compliance requirements if any are needed. The Federal Government has established the Australian Charities and Not-for-Profit Commission who administer and monitor the legislative requirements. The Foundation will report annually to the Commission.

The Charity House at 10 Windamere Crescent Port Lincoln was one of the big highlights of the past year. We extend our very sincere thanks to our major sponsors the Sarin Group, Keith Daniels Homes, Kemp Real Estate, EP Civil and the many suppliers, contractors and businesses who donated services, materials, and products to build a most beautiful home of great quality and design. Thank you for having the faith and foresight to take such a journey and build the very first Charity House on Eyre Peninsula ever to be sold for charity. Congratulations to all involved.

We established our very first Named Funds; the Cummins Community Future Fund and the Rotary Club of Port Lincoln Fund. This was a new journey for us all and took some thought and administration to implement. We look forward to seeing the funds grow over time and congratulate these two well respected organisations for their vision.

I attended the Community Foundation Forum in Kingscliff in NSW in August 2011 along with approximately 60 delegates from around Australia. Registration for EPCF to attend the Forum was sponsored by Philanthropy Australia. These Forums are always useful to attend if possible as a great deal of knowledge is shared and relationships are built.



MARKETING & FUNDRAISING COORDINATOR'S REPORT Cont.

During the past 12 months I have spoken to a number of groups about the Foundation including, Cummins Community Bank, Rotary Club of Port Lincoln, Port Lincoln Lions Club, Eyre Peninsula Local Government Association and local councils, to name just a few.

I have met with a number of individuals and discussed with them opportunities which exist for them within the Foundation.

The Board met with Bob Ramsay, the Eyre Regional Development Whyalla and Eyre Peninsula (RDAWEP) Special Projects Manager, and worked on re-viewing our Strategic Plan from which new ideas to build the Foundation's corpus of funds have evolved.

Through the RDAWEP in late 2011 BP Australia was introduced to the EPCF. I, Board Chairman, Glenn Karutz and Board Secretary Kate Clark met with representatives from BP. BP sought our expertise and local knowledge to disseminate some funds they wanted to invest into the community. Our first task was to provide them with the EPCF's Policies, Procedures and Legal Frameworks for approval. Once this was done we were asked to identify a variety of projects that would benefit from BP's funds. We wrote a submission and presented it to BP for consideration. BP articulated the monies they would make available and we were asked to identify specific projects in detail. We wrote another submission identifying 4 projects to receive funding for fuel and a senior high school to receive funding for a science project. A contract has now been signed between BP and EPCF and funds are due to be disseminated through the EPCF soon.

The EPCF on behalf of the Foundation for Rural and Regional Renewal (FRRR) and the Sydney Myer Foundation has once again disseminated the Back to School Voucher Program to 13 schools across the region. The feedback from schools, parents and communities has been positive with many families individually expressing their appreciation. The EPCF has recently registered our interest in disseminating 200 Vouchers in 2013.

I would like to thank my Board and also those who have contributed in some way to the Foundation.

But in particular I want to thank the Regional Development Australia Whyalla and Eyre Peninsula Board who continue to financially support the EPCF on a day to day, basis. The Foundation would not be where it is without this ongoing support on its journey to becoming self-sustaining as the corpus of funds slowly grows.

Faye Davis
Marketing & Fundraising Coordinator



EPCF CONTRIBUTORS 2011-2012

Regional Development Australia Whyalla and Eyre Peninsula

RSM Bird Cameron

The Sue Chase Foundation

Glenn Karutz

Neville Starke

Port Lincoln Unity Opportunity Shop

Geoff A & Wendy J Holman

Phil Lynch

Marie Lally AM & Kevin Lally

Damon Edmunds of Streaky Bay Marine Products

Peter A Treloar Member for Flinders

Port Lincoln Lions Club

Gary Plane Electrical

City of Port Lincoln Mayor's Charity Concert

Peter W Davis

Lincoln Estate Wines



NAMED FUNDS

In May and June 2012 the Eyre Peninsula Community Foundation were set up saw the establishment of our first Named Funds.

The Rotary Club of Port Lincoln deposited \$25,000

Cummins District Financial Service Ltd deposited \$25,000 into a named fund – Cummins Community Futures Fund



CHARITY HOUSE

MAJOR SPONSORS

SARIN GROUP – KEITH DANIELS HOMES

KEMP REAL ESTATE – EP CIVIL EARTH MOVING PTY LTD

SPONSORS

Austral Bricks - B & D Australia - Beaumont Tiles -- Boral Window Systems - Bristle Roofing – Chromagen - City of Port Lincoln - Coates Hire - Corinthian Industries - Custom Kitchen Company - DJG Designs - DK Quarries - EP Turf - Eyre Peninsula Frames & Trusses - Gary Plane Electrical - Groundwork Landscaping - Hanson Heidelberg Cement Group - Heather’s Curtain Centre & Tee Lighting – HPM - Keith Timber – Laminex - Mannix Air - Mark Danzic Roofing - Mark Forbes Homemaker - Mitre 10 Building Supplies - Novetec Building - Moving Fish Images - Outback Sleepers - PA Dansie & Associates - Port Lincoln Carpet & Flooring Direct - Port Lincoln Times - Revolution Roofing - SignFX - Solver Paints - Spectre Visual - Stassi Engineering - Town & Rural Fencing Services

THE JOURNEY BEGINS





CHARITY HOUSE



THE JOURNEY ENDS WITH PROUD OWNERS David & Jen Bann



EPCF PARTNERSHIPS

Back To School Voucher Program

The EPCF for the 4th year participated in the Back to School Voucher Program which is coordinated by the Foundation for Rural & Regional Renewal (FRRR) and funded by the Sidney Myer Fund and the Wyatt Benevolent Fund. **Since 2009, eight hundred and forty \$50 Vouchers valued at \$42,000 have been distributed to families across Eyre Peninsula.**

Students at Ceduna Area School - Cowell Area School - Elliston Area School - Kirton Point Primary School - Koonibba Aboriginal School - Lincoln Gardens Primary School - Long Street Primary School - Penong / Coorabie Primary School - Poonindie Community School - Port Lincoln Special School - Tumby Bay Area School - Whyalla Special School - Whyalla Stuart Primary School were recipients of Back to School Vouchers in 2012.

Howard Coote (right) on behalf of the EPCF presents Koonibba School Principal Wade Branford (Left) with Back to School Vouchers for his students.



FRRR Smoky Bay Jetty Specific Purpose Project

The jetty renovations were completed in time for the Smoky Bay Jetty Centenary Celebrations 1912-2012 in April with community and friends travelling from far and wide.



The Old



The New



EPCF PARTNERSHIPS Cont.

BP Australia

Amanda Bridge of Regional Development Australia Whyalla and Eyre Peninsula introduced BP to the Eyre Peninsula Community Foundation. A meeting was set up and discussions took place with Foundation Chairperson Glenn Karutz, Secretary Kate Clark and Coordinator Faye Davis and BP representatives Paul Evans and Maria Soares. The Foundation was asked to identify community projects in the region which would benefit from BP's community investment program and would the Foundation consider managing the funds on behalf of BP.

A submission was collated by the Foundation identifying 6 community projects which were favourably viewed by BP. BP and EPCF have signed a funding agreement for the administration of the funds that will be distributed.

The community projects are:

The Port Lincoln High School will receive \$10,000 for their "Science in the Field" project. Two separate groups of 15 students in year 11 who have selected to study science at SACE level and thus made an early commitment to science pathways will participate in a 3 day field trip round Eyre Peninsula investigating a range of scientific careers and also looking at sustainable energy initiatives. Five projects were also identified to receive funding for vehicle fuel from BP

The Port Lincoln Community House will receive \$1,000 that will enable them to reimburse their volunteers for use of their own vehicles.

The Port Lincoln / Lower Eyre Peninsula Red Cross Australia & Port Lincoln Community Enterprises Ltd (Port Lincoln Bendigo Community Bank) Community Vehicle Service will receive \$7,000 to fund their fuel costs of approximately \$600 per month.

The Far West Football League will receive \$1,000 for vehicle fuel to assist the league in supporting their players and officials to participate in the Mortlock Shield Football Carnival.

BP will provide the Far West Red Cross with \$4,000 to purchase fuel for the Community Vehicle.

The Eyre Peninsula Community Foundation has been acknowledged by BP and will provide the Foundation with \$2,000 for fuel.



STATEMENT OF DECLARATION

The Board of the Eyre Peninsula Community Foundation Inc [EPCF] declares the following in accordance with the Associations Incorporation Act 1985 [Act]:

- [1] The accounts present fairly the results of the operations of the EPCF for the 2011/12 financial year and the state of affairs of the EPCF as at the end of the 2011/12 financial year.
- [2] The Board has reasonable grounds to believe that the EPCF will be able to pay its debts as and when they fall due.
- [3] That no Board Member of the EPCF or a firm of which any Board Member is a member or a body corporate in which the Board Member has a substantial financial interest has received or become entitled to receive a benefit as a result of a contract between the Board Member, firm or body corporate and the EPCF.
- [4] That during the 2011/12 financial year no Board Member of the EPCF has received directly or indirectly from the ERDB any payment or other benefit of a pecuniary value, aside from meeting and travel allowances and honorariums where appropriate, as set out below.

NAME	MEETING/TRAVEL ALLOWANCE \$	HONARARIUM \$
Glenn Karutz – Chairperson	0	0
Kate Clarke - Secretary	0	0
Wendy Holman - Acting Secretary	0	0
Steve Errock	0	0
Damon Edmunds	0	0
Marie Lally AM	0	0
Phil Lynch	0	0
Jeff Poole	0	0
Kamron Clark	0	0
Liz Penfold	0	0
Jane Lowe	0	0

Signed: _____
Chairperson

Executive Officer

Date: _____



FINANCIALS

