



EYRE PENINSULA COMMUNITY FOUNDATION

Annual Report 2012/13

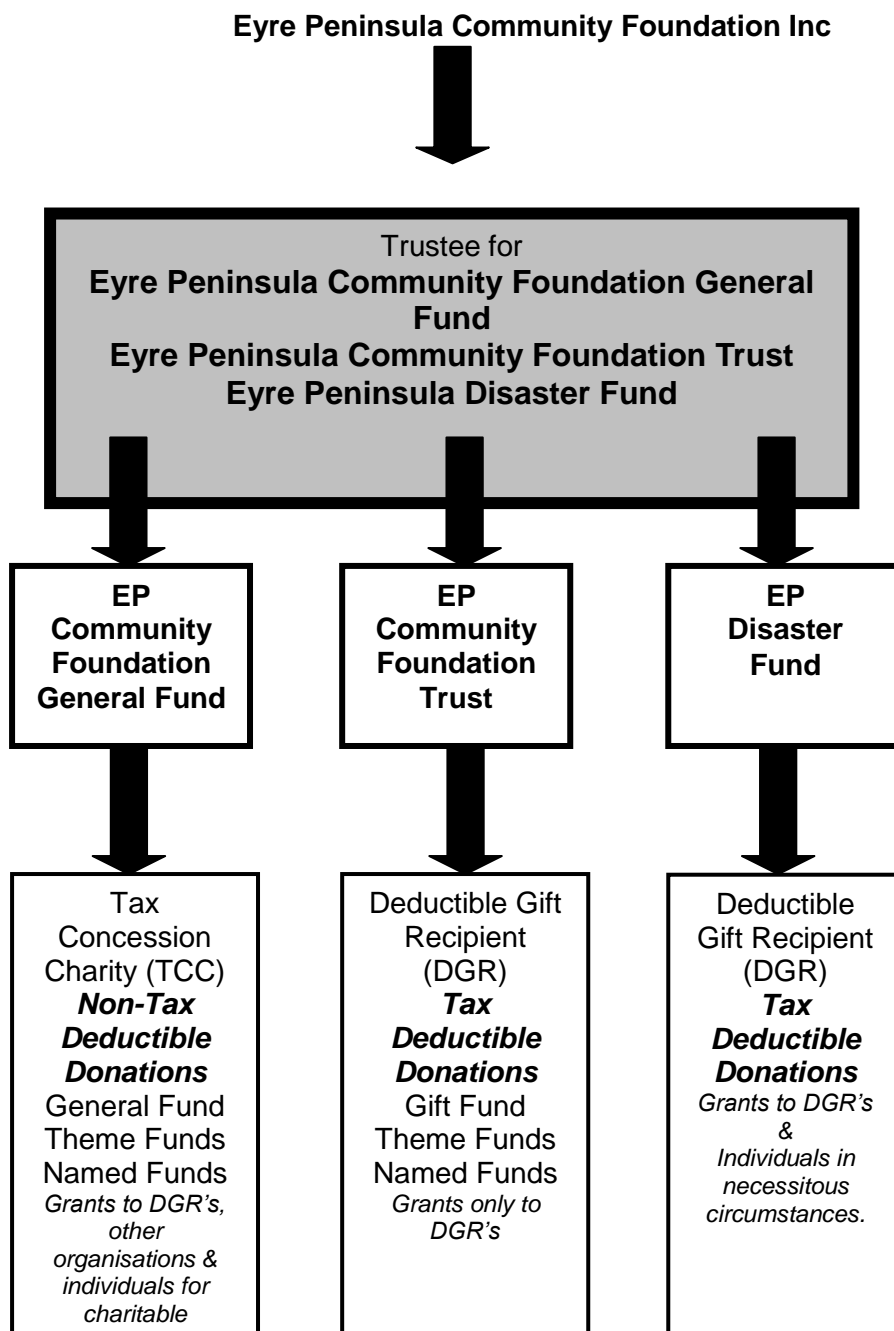
"YOUR SUPPORT STRENGTHENS OUR COMMUNITY"

Our Mission

The Eyre Peninsula Community Foundation enables the people of the Eyre Peninsula to proactively contribute to the long term benefit of our region by

- building community endowment,
- addressing local needs through charitable grant-making and
- encouraging philanthropy

“By 2015 the Eyre Peninsula Community Foundation is the premier philanthropic organisation on the Eyre Peninsula with a Public Fund of over \$3 million”



CHAIRMAN'S REPORT

It has been an honour to be Chairman this year which has seen the Eyre Peninsula Community Foundation continue to grow and evolve.

The EPCF Book Bazaar has provided us with a much needed physical presence in the community while raising funds to support the Foundation and our new EP Home Hospice Fund. Support from the community has been overwhelming - from the donations of books to our army of dedicated volunteers who have made the Book Bazaar a warm, friendly and brilliantly presented shop.

I thank Liz and Geoff Penfold for their enthusiasm, drive and dedication. Without them the Book Bazaar would not have happened and would not be the success it is. I also thank the Board for supporting Liz and Geoff.

This year has seen Faye Davis finish in her role of Marketing and Fundraising Coordinator. Faye has made an outstanding contribution over the last two years and we would not be where we are today without her. Faye was instrumental in developing our relationship with BP and the FRRR Back to School Voucher program while also putting together the 1000 Champions campaign and negotiating an advertising package with 5CC/Magic FM. The Board wishes Faye well in her future endeavours.

I would also like to thank RDAWEP for funding Faye's position and for their outstanding contribution and ongoing support. We look forward to continue working closely with them in the future.

This year we welcomed Janine Pip and Megan Hiller to the EPCF Board and this AGM will see Glenn Karutz and Wendy Holman step down.

Glenn is immediate past chairman, current treasurer and a founding Board member of the Foundation. As a Board member of the RDA he was involved in the creation of the Eyre Peninsula Community Foundation some 10 years ago. I would like to thank Glenn for his dedication and commitment to the Foundation. His depth of knowledge on Foundations, business and financial matters has been a great support to me and the Board. Glenn was instrumental in providing the Foundation with its single biggest financial contribution so far, Charity House. We will be forever grateful for Glenn's contribution and no doubt he will continue to be an ambassador for the Foundation.

Wendy has been an outstanding contributor to the Foundation and is the current secretary. Wendy is a councillor on the District Council of Lower Eyre Peninsula and a board member of Cummins Community Bank, providing the EPCF Board with valuable insight to the views and needs in the rural community. Wendy played a crucial role in establishing the named fund through the Cummins Community Bank and for that the Board is extremely grateful. Wendy has spent a lot of volunteer time putting together this year's Annual Report which is very much appreciated.

We took the Foundation to Tumby Bay and Cummins for board meetings for the first time this year and I thank the Board for supporting the concept which provided an opportunity for fellowship by sharing a meal afterwards.

This year has seen the formation of sub committees to act on key areas of our Strategic Plan and keep momentum between board meetings. The Publicity committee has seen us develop our Facebook page and integrate it with our website as well as keeping the website updated and relevant. Thank you to Steve Errock, Megan Hiller and Jeff Poole. The Finance committee has been working on an Investment Strategy that has now been adopted by the Board. Thank you to Glenn Karutz and David Mc Arthur: RSM Bird Cameron Financial Advisor for their work on this.

Looking ahead we have been chosen by Pt Lincoln Young Tradespeople and Professionals (YTAP) to be the recipients of the fundraising from the annual YTAP Ball. We look forward to working together with them on a 'Youth Retention' field trip to show high school students firsthand what exciting careers are available right here on the Eyre Peninsula.

We will also be relaunching our 1000 Champions campaign directing the donations to the Home Hospice Fund, to help provide enough funding to continue a palliative care service past a one year trial.

It has been a privilege to be Eyre Peninsula Community Foundation Chairman and I thank the board for their support and friendship. Thank you to everyone who has made a contribution to the Foundation whether it was financial, time, in kind support or book donations. I look forward to another big year ahead.

Kamron Clark: Chairman

BOARD of DIRECTORS 2012 - 13



Chairman - Kamron Clark

Director since 17 Nov 2011

Currently Owner of Port Lincoln Budget Rent a Car franchise.
2002 – 2009 Active member of the Port Lincoln Apex Club - Club Secretary, Treasurer and President.
2007 Convention Chairman on the Apex National Board. The national convention was held in Port Lincoln in 2007 and hosted 200 Apexians and their families.
Member of the EP Bushfire Charitable Funds Committee responsible for disseminating funds to individuals and groups across the fire affected area.



Deputy Chairperson- Stephen Errock

Director since 28 October 2010

Currently Principal of Port Neill Primary School.
30 years in Education throughout South Australia, taught in 9 schools and been Principal of 3, Field Officer for South Australian Institute of Teachers and Australian Education Union for 13 years.
Inaugural member of the Limestone Coast Area Consultative Committee, advising the Australian Government on local economic development issues for 7 years, and inaugural member of the Greater Green Triangle Economic Development Board for 5 years. A steering committee member of the Limestone Coast ACC that established the Stand Like Stone Foundation.
Served 8 years as a Board Member and Chairman of the Board of Mainstreet Community Theatre Company, 6 years as a Board Member and Chairman of Lifeline South East. Life membership of Apex Australia with 19 years of service, serving 3 years as the SA/NT Board District Governor and Citizenship Director. Convener of Apex National Service project to support the Royal Flying Doctor Service.



Secretary – Wendy Holman

Director since 18 February 2010

Currently in family partnership operating a broad-acre cropping and sheep enterprise at Cockaleechee.
25 years in Education as Secondary Teacher, Senior school co-ordinator and counsellor, and teacher librarian.
Volunteers as a Director and past Secretary of the Cummins Financial Services which manages the Cummins District Community Bank, Director and Chairperson on the Lower Eyre Health Services Board for 5 years and inaugural Presiding Member of the Lower Eyre Health Advisory Council. Inaugural and continuing member of the Cummins District Enterprise Committee, as well as past Chairperson/ Secretary. Elected as Councillor on the District Council of Lower Eyre Peninsula in 2010.
In 2001, awarded South Australian Citizen of the Year.



Treasurer - Glenn Karutz

Director since 17 November 2008

Raised on a farming property at Wirrulla, Eyre Peninsula, Glenn left in 1970, and commenced work in a chartered accounting firm. He gained a Bachelor of Arts in Accounting and is a Chartered Accountant, providing business advice in a variety of business sectors. Glenn became managing partner of the Port Lincoln, Adelaide and Sydney offices of his firm and spent over 20 years of his career before recently retiring in Port Lincoln.
Active involvement in the community. Past member of the Regional Development Australia Whyalla and EP Board; past President and current Member of Rotary, past Director of the Port Lincoln Bendigo Community Bank and past Member of the board of management at Ravendale Community Sports Centre. A life member of Apex Clubs Australia, Tasman Football Club and a Paul Harris Fellow of Rotary.
He is also a Justice of the Peace.



Director - Public Officer - Liz Penfold

Appointed 6 March 2012

Early years spent on a farm in Lock, then school teaching in Tumby Bay and Adelaide, before six years in the Public Service in Papua New Guinea including as Purchasing officer and Contracts Clerk in Port Moresby then librarian for the Institute of Medical Research in Goroka. Worked on Eyre Peninsula in accounting practice with her husband before starting her own Computer business in stock control.

Over 16 years, from 1993 to 2010, Liz was the Member for the State Electorate of Flinders. She served as Shadow Minister for Small Business, Regional Development and Consumer Affairs, was an active participant in the Transport, Health, Education, Regional Development, Primary Industries, Mining, Tourism and Small Business Backbench Committees. Lobbied at both state and federal level for the delivery of adequate water and power services and education, health and communication in the Eyre Peninsula region. Currently a Graduate Member of the Australian Institute of Company Directors, Advisory member of the Australian Patients Association, Chairman of the Home Hospice Association, a registered lobbyist and JP.



Director - Marie Lally AM

Director since 22 October 2009

Primary producer in the Lock, Kopi, Warrambo districts for almost 40 years. Retired to Tumby Bay in 2007. Roles on boards and panels over the years include the SA Arts Council for Eyre Peninsula; the Lock Health and Welfare Community Board; the SA Country Women's Association becoming State and later National President serving from 2000-2003, member of the Rural Women's Advisory Council to the Deputy Prime Minister. Currently the SA representative on the National Rural Health Alliance Friends Advisory Committee, Member of the Lower Eyre Health Advisory Council and President of the Tumby Bay Hospital and Uringa Auxiliary. In 2008 became a director on the Australian Year of the Farmer Ltd.

Awarded Citizen of the Year for the Elliston District Council in 1998; the Centenary Medal of Federation of Australia in 2003, for outstanding service to women in Rural Australia, and in 2004 appointed a Member in the General Division of the Order of Australia, AM.



Director - Jeff Poole

Director since 6 March 2012

Owned and operated a Landscaping and Gardening business and Computer and IT business in the Port Lincoln area for 15 years. Until 2012, employed by TafeSA as a Lecturer in the Aquaculture sub-program of Primary and Allied Industries Program. A volunteer member of the SA Country Fire Service serving as 1st Lieutenant for 20 years, Administration Officer Training Officer, Communication Officer also at Brigade level and roles at Group level.

A Justice of the Peace since 1986 and has a Science Degree in Earth Science (Geology). Since December 2012 a contract geologist, Member of the Australian Institute of Mining and Metallurgy (MAusIMM) and appointed December 2012 as a Knight of the Order of St Joachim (KJ).



Director – Megan Hiller

Director since February 2013

Born and raised in Adelaide. After graduation with Degree in Speech Pathology moved to Whyalla and worked at the hospital for 2 years. During this time travelled all over the Eyre Peninsula. Returned to Adelaide to work in more specialised roles for a short time before moving back to the Eyre Peninsula. For past three years have lived and worked in Port Lincoln. Involved in Wanilla Netball Club, involved in YPW (Young Professionals Whyalla) and am now on the YTAP (Young Tradespeople and Professionals) Committee.

These groups focus on supporting new people to the Eyre Peninsula to ensure we are building and retaining a skilled workforce for the future of the region.

Director - Janene Piip

Appointed April 2013



Janene Piip is a facilitator of business, community and social capability projects, an experienced workforce development researcher and has most recently been involved with a large scale workforce development project funded by the CRC for Rail Innovation. The project was conducted in the nine Australian rail industry organisations focussing on issues of leadership and management, mentoring, coaching and career development in rail.

She has recently undertaken her PhD in Education by research, investigating issues of leadership talent management and workforce productivity in rail organisations. Janene has interest in philanthropy, funding and empowering people to solve local issues. She is an Eyre Peninsula resident on the family farm at Warratta, north of Tumby Bay.



STATEMENT OF DECLARATION

The Board of the Eyre Peninsula Community Foundation Inc [EPCF] declares the following in accordance with the Associations Incorporation Act 1985 [Act]:

- [1] The accounts present fairly the results of the operations of the EPCF for the 2012/2013 financial year and the state of affairs of the EPCF as at the end of the 2012/13 financial year.
- [2] The Board has reasonable grounds to believe that the EPCF will be able to pay its debts as, and when, they fall due.
- [3] That no Board Member of the EPCF or a firm of which any Board Member is a member or a body corporate in which the Board Member has a substantial financial interest has received or become entitled to receive a benefit as a result of a contract between the Board Member, firm or body corporate and the EPCF.
- [4] That during the 2012/13 financial year no Board Member of the EPCF has received directly or indirectly from the RDAWEP any payment or other benefit of a pecuniary value, aside from meeting and travel allowances and honorariums where appropriate, as set out below.

NAME	MEETING/TRAVEL ALLOWANCE \$	HONORARIUM \$
Kamron Clark – Chairperson	0	0
Steve Errock - Deputy Chairperson	0	0
Wendy Holman - Secretary	0	0
Glenn Karutz - Treasurer	0	0
Marie Lally AM	0	0
Jeff Poole	0	0
Liz Penfold	0	0
Megan Hiller	0	0
Janene Piip	0	0

Signed: _____

Chairperson

Secretary

Date: _____



MARKETING & FUNDRAISING CO-ORDINATOR'S REPORT

CHARITY HOUSE – 10 Windamere Cres., Port Lincoln, was officially sold on 27th September 2012 to David & Jen Bann. The profit from the sale of the Charity House of **\$143,519.03** was deposited into the EPCF General Fund. We extend our sincere thanks once again to our major sponsors, the Sarin Group, Keith Daniels Homes, Kemp Real Estate, EP Civil and the many suppliers, contractors and businesses who donated services, materials, and products to build a most beautiful home of great quality and design. This was the very first Charity House to be sold on Eyre Peninsula.

INAUGURAL GRANT ROUND – The EPCF held its inaugural Grant Round calling for applications in August/September 2012. A total of **\$2,500** was presented in November at the Annual General Meeting, to 4 community groups. The Coffin Bay Progress Association installed water saving cisterns in their community hall toilets, Cleve AH&F Society built new exit doors, Ungarra Township Progress Association installed artificial grass at the Play-centre, and Orana Whyalla provided a social interactive program for children in respite care.

BACK TO SCHOOL VOUCHER PROGRAM - In February 2013 the EPCF distributed 200 Sydney Myer Fund / Foundation for Rural and Regional Renewal (FRRR) Back to School Vouchers. **Since 2009 the EPCF has distributed a total of 1,039 Back to School Vouchers, valued at \$51,950.00, across 21 schools in 10 Council areas** throughout Eyre Peninsula.

BP AUSTRALIA FLOW-THROUGH FUNDS – During 2012 - 2013 the EPCF managed Flow-through Funds on behalf of BP. A total of \$25,000.00 was disseminated to 6 projects identified in Port Lincoln and Ceduna. Fuel vouchers valued at \$15,000 were distributed. Recipients were the Lower Eyre Red Cross Community Transport Service (\$7,000), Community House Port Lincoln (\$1,000), EPCF (\$2,000), Far West Football League (\$1,000), and Ceduna Red Cross Community Transport Service (\$4,000). Port Lincoln High School received funding of \$10,000 for 2 "Science in the Field" projects. Reports have been presented to BP, and 5 of the current projects will continue to receive funding for fuel for another year.

"BE A CHAMPION, MEET THE CHALLENGE" 1,000 DONATIONS \$1,000 TO HELP TO RAISE YOUR LOCAL FOUNDATION'S CORPUS OF FUNDS TO \$1 MILLION – The campaign was launched in 2013, and continues to be available for the community to become a Champion of the Eyre Peninsula Community Foundation.

"1,000 donations of a \$1,000" is very achievable for this region. Some funds have been raised and businesses and individuals have signed pledges to fundraise or donate a \$1,000 over the next 12 months. "\$1,000 Pledges" have been made by Adventure Bay Charters, Lincoln Rural Supplies, Boston Bay Wines, Marina Hotel, Faye Davis, staff at Port Lincoln Regional Development Australia. Donations have been received from Tony and Vicki Irvine, an Anonymous Port Lincoln resident, Lower Eyre Peninsula Council Mayor Julie Low, City of Whyalla, City of Port Lincoln Councillors Jim Papazoglov and Faye Davis, City of Port Lincoln Mayor Bruce Green, Tumby Bay Country Women's Association, Port Lincoln Lions Club, Glenn Karutz, Geoff and Liz Penfold,.

PORT LINCOLN COMMUNITY BANK – The EPCF and Port Lincoln Community Bank have discussed establishing a partnership to receive Tax Deductible donations from the community for an indoor swimming facility, subject to the City of Port Lincoln Council committing to the building of such a facility in Port Lincoln.

AUSTRALIAN CHARITIES & NOT FOR PROFIT COMMISSION - Philanthropy Australia and the legal firm Freehills has continued to guide and advise Community Foundations through the new Federal Legislative changes and requirements for Public Ancillary Funds (EPCF Trust Fund). The Federal Government has established the Australian Charities and Not-for-Profit Commission. All Community Foundations are now required to report annually to the Commission.

COMMUNITY FOUNDATION FORUM - Philanthropy Australia and the Foundation for Rural and Regional Renewal once again coordinated and funded the annual Community Foundation Forum held in Mackay in August 2012. The Forum attracted registrations from Community Foundations across Australia and Australian and international presenters. The program covered topics such as "The Fiduciary Responsibilities of Community Foundations", "The FRRR Natural Disaster Recovery Framework & Findings from the Bushfire Collaborations in Victoria", "The Australia Charities and Not-for-profit Commission and regulatory changes" along with many others. I was pleased to attend on behalf of EPCF and board members take the opportunity to attend these annual Forums when possible. I would like to thank Regional Development Whyalla and Eyre Peninsula for their support during my time with the EPCF. I also extend my thanks to the EPCF Board.

Faye Davis Marketing & Fundraising Co-ordinator

EP Community Foundation Donors 2012 – 2013

The Eyre Peninsula Community Foundation is grateful for our supporters. The commitment made by these individuals and business entities has enabled the Foundation to develop the philanthropic approach to invest in projects and Eyre Peninsula community organisations that sustain our region's capacity for growth.

- Regional Development Australia Whyalla and Eyre Peninsula
- RSM Bird Cameron
- The Sue Chase Foundation
- Glenn Karutz
- Neville Starke
- Port Lincoln Unity Opportunity Shop
- Geoff & Wendy Holman
- Phil Lynch
- Peter W Davis
- Marie Lally AM & Kevin Lally
- Damon Edmunds of Streaky Bay Marine Products
- Gary Plane Electrical
- Peter A Treloar Member for Flinders
- Port Lincoln Lions Club
- City of Port Lincoln Mayor's Charity Concert
- Lincoln Estate Wine
- Cleve District Council
- Katherine Clarke
- Rotary Club of Port Lincoln
- District Council of Tumby Bay
- Karen Burrows
- Cummins District Community Bank
- Steve & Judy Errock
- Kamron & Kumarie Clark Budget Rent-a-Car
- Liz & Geoff Penfold
- Lincoln Minerals
- Foundation for Rural and Regional Renewal
- Faye Davis
- Woodside Mining
- District Council of Ceduna
- Mike Leech
- Eyre Peninsula Local Government Association
- BP Australia.

"To donate to the Eyre Peninsula Community Foundation means we can be sure that all the money remains local, and is able to help those that need it to improve what we have to offer on Eyre Peninsula."

Wendy and Geoff Holman, Cockaleeche



CHAMPIONS

Lucy, Angus, Tracey, Matt & Campbell Waller

Adventure Bay Charters

Pledge \$1,000

- *In-kind support received from:* Collins Anderson Management, Port Lincoln Lions Club, Lincoln Computer Centre, Lincoln Estate Wines, Steve James: RSM Bird Cameron, Joseph Anderson: Jenkins Anderson Solicitors, Telstra Country Wide, The Foundation for Rural & Regional Renewal, Sydney Myer Fund, Momentum Design, Faye Davis, The Eyre Peninsula's 765 5CC & Magic 89.9, Liz & Geoff Penfold, Wyatt Benevolent Fund, The Sydney Myer Fund
- *Charity House contributors* - Sarin Group Property, Keith Daniels Homes, Kemp Real Estate, EP Civil Earth Moving, Austral Bricks, B & D Australia, Beaumont Tiles, Belair Pavers, Boral Window Systems, Bristle Roofing, Chromogen, City of Port Lincoln, Coates Hire, Corinthian Industries, Custom Kitchen Company, DJG Designs, DK Quarries, EP Turf, EP Frames & Trusses, Gary Plane Electrical, Groundwork Landscaping, Hanson Heidelberg Cement Group, Heather's Curtain Centre & Tee Lighting, HPM, Keith Timber, Laminex, Mannix Air, Mark Danzic Roofing, Mark Forbes Homemaker, Mitre 10 Building Supplies, Novetec Building, Moving Fish Images, Outback Sleepers, PA Dansie & Associates, Port Lincoln Carpet & Flooring Direct, Port Lincoln Times, Revolution roofing, SignFX, Solver Paints, Spectre Visual, Stassi Engineering, Town & Rural Fencing Services.
- *Champions of the Eyre Peninsula Community Foundation* - Adventure Bay Charters, Lincoln Rural Supplies, Boston Bay Wines, Marina Hotel, Faye Davis, staff at Port Lincoln Regional Development Australia. Donations have been received from Tony and Vicki Irvine, an Anonymous Port Lincoln resident, Lower Eyre Peninsula Council Mayor Julie Low, City of Whyalla, City of Port Lincoln Councillors Jim Papazoglov and Faye Davis, City of Port Lincoln Mayor Bruce Green, Tumby Bay Country Women's Association, Port Lincoln Lions Club, Glenn Karutz, Geoff and Liz Penfold.



NAMED FUNDS

In May and June of 2012 the Eyre Peninsula Community Foundation saw the establishment of Named Funds.

The Rotary Club of Port Lincoln established the Port Lincoln Rotary Fire Infrastructure Named fund with a contribution of \$25,000. This is to support a whole of region disaster response or preparedness associated with bushfire.

The Cummins Community Future Fund was established by the Cummins District Financial Service Ltd with a contribution of \$25,000. A further \$15,000 contribution was made in June 2013.

The EP Home Hospice Fund was established in 2013 with initial funding support from Mike Leech.

The Eyre Peninsula Community Foundation makes it easy for organisations, individuals or families to support community projects in the EP region by establishing a Named Fund.

A donation is invested with other trust funds but grants made from the donation are acknowledged as being made from the Named Fund. The original donation is never spent, but keeps on giving to the community long after the money or asset was donated.

A Named Fund is ideally suited to an individual, family, or business wishing to provide support to a range of charities and community groups across Eyre Peninsula, to leave an ongoing legacy to the community, or to honour a family member, friend or outstanding citizen. They are an alternative to Private Ancillary Funds (PAF) offering some very real benefits to the donor.

In a Named Fund -

- Funds are referenced and acknowledged in the name specified by the donor. This can be an individual, partners, family names, a business name or in memory of someone.
- The fund is named from the outset, although the initial minimum contribution can be made over a period of years.*
- The donor can participate in the fund as little or as much as they desire.
- Ongoing contributions, whilst not essential, are recommended at least for a few years.
- Donations to the fund are tax deductible where required**
- Named Fund donors are able to be involved in presenting grants from the fund if they wish
- The fund continues into perpetuity, even after the donor's passing.
- Donors may indicate a preference that a particular group or type of eligible project is to benefit from its donation.

By establishing a Named Fund with the Eyre Peninsula Community Foundation donors are ensuring that the local community will receive perpetuity grants from their fund, rather than a once off donation. We are happy to discuss this or any other options with you, confidentially and totally obligation free.

** The minimum contribution is an initial donation of \$10,000 growing to \$50,000 over five years.*

*** Where tax deductible gifts are received, conditions can apply limiting certain grant options*

Other Activities in 2012-2013

CHARITY HOUSE

Completion of this project occurred in September 2012 when 10 Windamere Crescent, Port Lincoln was officially sold. The profit from the sale of the Charity House was **\$143,519.03**. As it was a new venture for Eyre Peninsula being the first charity house built and sold on Eyre Peninsula, our sponsors are to be congratulated and thanked for their support.

MAJOR SPONSORS

SARIN GROUP – KEITH DANIELS HOMES

KEMP REAL ESTATE – EP CIVIL EARTH MOVING PTY LTD

SPONSORS

Austral Bricks - B & D Australia - Beaumont Tiles –Bel-Air Pavers - Boral Window Systems - Bristle Roofing – Chromagen - City of Port Lincoln - Coates Hire - Corinthian Industries - Custom Kitchen Company - DJG Designs - DK Quarries - EP Turf - Eyre Peninsula Frames & Trusses - Gary Plane Electrical - Groundwork Landscaping - Hanson Heidelberg Cement Group - Heather’s Curtain Centre & Tee Lighting – HPM - Keith Timber – Laminex - Mannix Air - Mark Danzic Roofing - Mark Forbes Homemaker - Mitre 10 Building Supplies - Novetec Building - Moving Fish Images - Outback Sleepers - PA Dansie & Associates - Port Lincoln Carpet & Flooring Direct - Port Lincoln Times - Revolution Roofing - SignFX - Solver Paints - Spectre Visual - Stassi Engineering - Town & Rural Fencing Services

EP FIELD DAYS

We were hosted by the RDA in their shed pavilion and Faye Davis with several board members spent time at the Field Days. It provided an opportunity to highlight what the EPCF is doing and how people can support it. Sue Chase visited the site and she has made an ongoing commitment to the EPCF.



Faye Davis, Sue Chase and Marie Lally meet at 2012 EP Field Days site for EPCF

GRANT ROUND

The EPCF held its inaugural Grant Round in 2012 and a total of **\$2,500** was presented in November at the Annual General Meeting. 4 community groups were successful recipients of the grants.

The Coffin Bay Progress Association installed water saving cisterns in their community hall toilets, Cleve AH&F Society built new exit doors for their pavilion, Ungarra Township Progress Association installed artificial grass at the Play-centre, and Orana Whyalla provided a social interactive program for children in respite care.

Successful grant application to Cleve A.H & F Show.
Faye Davis presented the grant to Judy Kraehe and Judy Minge





“This grass has transformed the area, thus increasing the space for outside play but still remaining within the play centre fence. A great positive was the ability of the volunteers to relocate our toy shed to another area and increase the coverage area of the grass.....

Thanks for the assistance. Artificial grass is very expensive and every amount of funding provided was greatly appreciated.”

Karen Baines Ungarra Township Progress Association

BACK TO SCHOOL VOUCHER PROGRAM

Since 2009 the EPCF has distributed a total of 1,039 Back to School Vouchers, valued at \$51,950.00, across 21 schools in 10 Council areas throughout Eyre Peninsula. In February 2013 the EPCF distributed 200 Sydney Myer Fund / Foundation for Rural and Regional Renewal (FRRR) Back to School Vouchers. Ceduna, Cowell, Elliston, Kirton Point, Koonibba, Lincoln Gardens, Penong Coorabie, Poonindie, Pt Lincoln Special, Tumby Bay, Whyalla Special, and Stuart High School students and families, were recipients of Back to School Vouchers valued at **\$10,000**.

BP AUSTRALIA FLOW-THROUGH FUNDS

A total of \$25,000.00 was disseminated to 6 projects identified in Port Lincoln and Ceduna. Fuel vouchers valued at \$15,000 were distributed to the Lower Eyre Red Cross Community Transport Service (\$7,000), Community House Port Lincoln (\$1,000), EPCF (\$2,000), Far West Football League (\$1,000), and Ceduna Red Cross Community Transport Service (\$4,000). Port Lincoln High School received funding of \$10,000 for 2 “Science in the Field” projects.



Port Lincoln High School students on “Science in the Field” trip 2013

Matt Pinnegar: BP Government Affairs Advisor, Sarah Striven-Coupe: Ceduna Red Cross, Faye Davis EPCF, Ron Redford: Far West Football League 2



Matt Pinnegar: BP Advisor, Tristan Kouwenhoven Port Lincoln High School Deputy Principal, Frasc



Christine Sherry: Port Lincoln Red Cross, Linda Davies: Community House Port Lincoln, Matt Pinnegar: BP Government Affairs

BOOK BAZAAR

The 6 month trial for the EP Book Bazaar started on the 1st April and finishes at the end of September. The success of this charitable business selling pre-loved books has surpassed expectations, and the level of volunteering exhibited in establishing this community venture is commendable. 50% of the profits raised is contributing to the Home Hospice General Fund to help pay for the 12 month trial to place palliative care nurses into homes after hours for the terminal phase of a patient's life. As the partner in this venture, the Foundation retains 50% of the profits to support administration and the marketing and development of the Eyre Peninsula Community Foundation, and strengthening the Home Hospice Palliative Care nurse project.

1000 CHAMPIONS

A campaign was launched in March 2013 to

**“BE A CHAMPION,
MEET THE CHALLENGE”
1,000 DONATIONS OF \$1,000**

to help raise your local Foundation's corpus of funds to over \$1 Million.

With the EPCF Corpus of funds around \$283,000 (April 2013) the aim is to increase the ability to disseminate earnings across Eyre Peninsula through an annual Grant allocation process.

The Eyre Peninsula Community Foundation (EPCF) belongs to the people of Eyre Peninsula. It is your LOCAL Community Foundation.

“By donating to the Eyre Peninsula Community Foundation you will be keeping your donation LOCAL for LOCAL benefit.”

How YOU Can Help Make a Long Term Difference – “Give where you Live”

The Eyre Peninsula Community Foundation encourages individuals and corporate donors to make donations to the Foundation so that the capital they donate is retained in the Eyre Peninsula region and the income is used to meet the needs of the local communities.

Become a Donor

The Foundation is different from most other charitable organisations. The donation you make becomes the capital and the funds are invested with an emphasis on security and under the guidance of professional advisers. The income earned from investing your donation is distributed to the Eyre Peninsula community, and will continue to generate an income for distribution forever.

The Foundation is available for donors who wish to “Give where they Live” and assist charitable organisations and projects with no entry or establishment cost.

Gift Options

Donors are encouraged to make their gifts in a number of ways depending on their aims:

- Unrestricted or Discretionary Gifts – able to be used by EPCF to make a wide range of charitable purpose grants
- Named Funds – can carry the name of the donor or the donor's family. The name may honour someone or preserve the memory of a family member, friend, pioneer or outstanding citizen
- Bequests – Make a bequest to EPCF in your will. It can be acknowledged or anonymous
- Workplace Giving – simple and effective way for business and employees to engage with the community and make an ongoing valuable contribution.

If you want to donate or require more information check out the website epcf.com.au

EPCF TREASURER'S REPORT

30TH JUNE 2013

I have pleasure in presenting a report on the financial operations of the EP Community Foundation for the year ended 30th June 2013.

The audited financial statements are attached herewith however I wish to highlight various aspects of the year's operations.

We commenced the year with \$109,849 in the 3 trust funds that we operate (General Fund, Trust Fund and Disaster Fund) and finished the year with \$311,889.

The above means that we increased the funds held by \$202,040 after making various grants to community groups.

The major contributions to this came from the following:-

House & Land package sale (Keith Daniels Homes, Sarin Group and trades people)	\$150,000
BP Ltd	\$ 25,000
Cummins Bendigo Community Bank	\$ 15,000
EP Home Hospice Donations:-	
M Leech	\$ 5,000
PL Rotary Club	\$ 10,000
Alliance One/5CC Bushfire appeal funds	\$ 9,602
1000 donations of \$1000 Campaign	\$ 7,200
Sue Chase Foundation	\$ 2,000
PL Lions Club	\$ 1,000

During the year we distributed grants totalling \$37,500 to the following organisations:-

Red Cross Pt Lincoln & Ceduna	\$ 11,000
PL High School	\$ 10,000
Back to School vouchers (200 at \$50)	\$ 10,000
EPCF fuel subsidy from BP	\$ 2,000
Community House	\$ 1,000
Orana Whyalla	\$ 1,000
Far West Football League	\$ 1,000
Ungarra Progress Association	\$ 500
Cleve A&H Society	\$ 500
Coffin Bay Progress Association	\$ 500

From this it can be seen that the Foundation has made a significant contribution to the Eyre Peninsula communities and we thank those partners and supporters who have made that possible.

It should be noted that the Alliance One/5CC fire funds of \$9,602 will be distributed in the coming year.

Our aim has been to achieve our first \$1m within the trust funds and whilst not achieved this year we are well on the way to that milestone.

In the latter part of the year we saw a major focus on the newly established EP Home Hospice organisation and through the efforts of Liz and Geoff Penfold the BOOK BAZAAR was established in Napoleon Street to provide much needed funding for that service.

In my view this business activity has done more than that as it has provided a real focus for the fundraising direction of the Foundation and substantially increased the network of personnel by the incredible number of volunteers who have assisted that operation.

Since the end of the year we have seen this boosted by donations in memory of a number of people. This has received excellent support from the funeral homes and will no doubt be a significant source of monies in the future.

The EPCF Foundation now holds several sub funds for specific organisations and purposes. These are as follows:-

Cummins Community Future Fund	\$40,495
PL Rotary Disaster Fund	\$27,037
EP Home Hospice Fund	\$23,955

The aim is to build on these sub funds and contribute significantly to the various community sectors that they represent.

Overall the year has been a very successful one.

After some 10 years involvement I am stepping down to pursue other interests. and I wish the Foundation well with its future endeavours.

Glenn Karutz
Treasurer