



**EYRE PENINSULA
COMMUNITY
FOUNDATION**

**Annual Report
2013/2014**

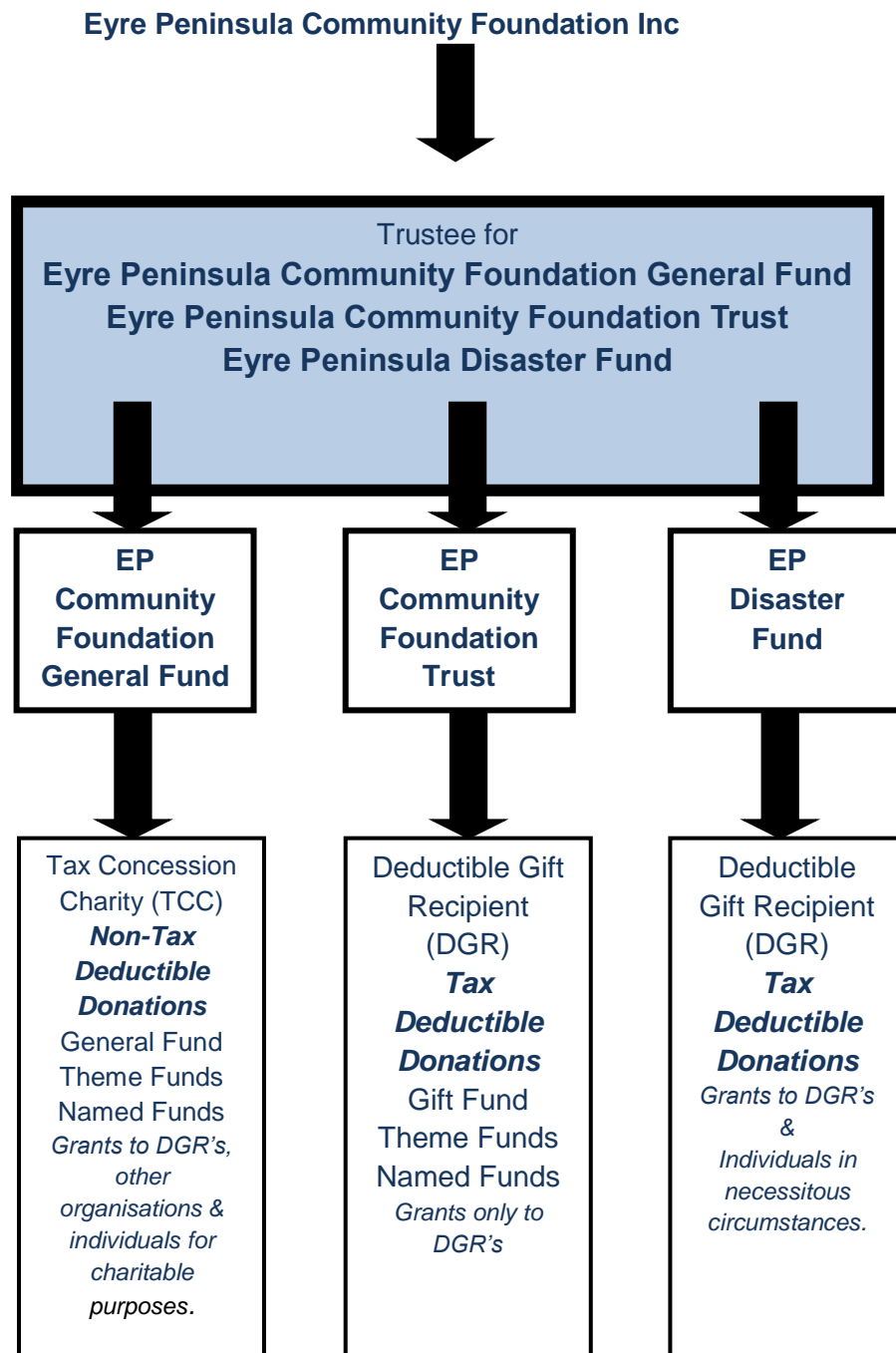
"YOUR SUPPORT STRENGTHENS OUR COMMUNITY"

Our Mission:

The Eyre Peninsula Community Foundation enables the people of the Eyre Peninsula to proactively contribute to the long term benefit of our region by:

- Building community endowment
- Addressing local needs through charitable grant making
- Encouraging philanthropy

“By 2017 the Eyre Peninsula Community Foundation is the Premier Philanthropic Organisation on the Eyre Peninsula with a public fund of over \$3 million”



CHAIRMAN'S REPORT 2013/14

It has been a productive and challenging year and an honour to continue in the role of chairman.

I would like to thank the EPCF Board for their efforts and support through this term. Liz Penfold resigned from the board in April and made a fantastic contribution in her two years in the foundation. Liz's passion, drive and experience created the thriving community enterprise that is the Book Bazaar and for that the foundation will forever be grateful. Gary Downey joined us this year and is well connected and brings a new perspective to the board.

The past year has seen the Book Bazaar blossom and is a beautifully presented welcoming place staffed by wonderful volunteers. We continuously receive positive feedback from customers and all the volunteers should be extremely proud of what they have created. Mary Gudzenovs stepped down as volunteer coordinator in April after doing an outstanding job attracting and organizing our volunteers into rosters and shop presentation. On behalf of the board thank you very much for your efforts.

This year we made our first distribution from the disaster fund in response to the Sleaford Bay fire. We partnered with Magic 89.9/5CC, EP Grain and Beyond Bank to distribute \$11,000 to fire affected local residents. Glenn Karutz was instrumental in identifying the affected landholders and mailed out a questionnaire to establish and quantify the effect the fire had to people and property. The distribution was expedited in a professional and thoughtful manner and established new mutually beneficial partnerships. The Eyre Peninsula Community Foundation is now listed as an eligible recipient for people who have or open a Community Reward Account with Beyond Bank.

The foundation has had to alter its operating structure in the wake of budget cuts to the RDAWEP. The foundation is now self-funding the role of Administration Officer and we have been extremely fortunate to have found an absolute gem in Susan Hooker. Susan has been doing a fantastic job of not only keeping on top of the foundations administration and regulatory obligations but also overseeing the Book Bazaar operations and coordinating volunteers. Susan regularly provides more of her time than we pay her for; her energy is infectious and is highly organized and motivated. The board very much appreciates Susan's efforts this year.

The Home Hospice trials are yet to take place but it is not for lack of effort from Liz and Geoff Penfold and the EP Home Hospice Association. As you would appreciate caring for the terminally ill in their home is a highly specialised and sensitive field and I have full confidence that in the near future a suitable partner will be found who can provide the trail and meet all regulatory obligations. In the meantime fundraising still continues to support the Home Hospice Fund that is now holding over \$150,000.00.

The YTAP Ball was a success in raising over \$8000.00 to enable the Eyre Peninsula Community Foundation to kick start the 'Careers in the Region' program. The aim is to showcase to students the exciting careers that are available right here on the EP in an effort to retain our youth. YTAP will partner with us by tapping into their membership and host students in their workplaces.

I would like to thank everyone who made a financial contribution to the Eyre Peninsula Community Foundation this year. We are very grateful for the ongoing support of BP, Bendigo Bank Cummins and Port Lincoln, Rotary, Lions, Unity Hill Op Shop, YTAP, Sue Chase and everyone who bought a book from the Book Bazaar.

I would also like to thank Dion Dorwood and the staff at the Regional Development Whyalla and Eyre Peninsula office in Port Lincoln with their ongoing generous support and provision of workspace and resources for Susan.

We have had a year of consolidation and awareness as the foundation continues to grow. I look forward to an exciting year ahead.

Kamron Clark

Chairman



BOARD OF DIRECTORS 2013/14



Chairman - Kamron Clark

Director since November 2011

I am currently employed by Sarin Group.

2005 - 2014 owned Port Lincoln Budget Rent a Car franchise, growing the business from 8 vehicles to a fleet of 30 with 2 employees.

2002 – 2009 Active member of the Port Lincoln Apex Club - Club Secretary, Treasurer and President.

2007 Convention Chairman on the Apex National Board. The National Convention was held in Port Lincoln in 2007 and hosted 200 Apexians and their families.

Member of the EP Bushfire Charitable Funds Committee responsible for disseminating funds to individuals and groups across the fire affected area.



Deputy Chairperson - Stephen Errock

Director since October 2010

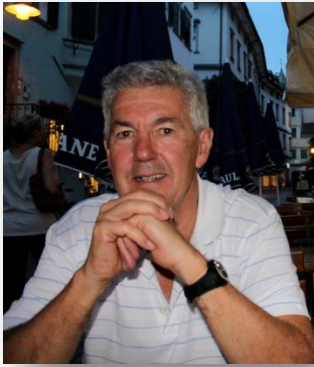
I am currently Principal of Port Neill Primary School.

42 years in Education throughout South Australia, taught in 9 schools and been Principal of 3, Field Officer for South Australian Institute of Teachers and Australian Education Union for 13 years.

Inaugural member of the Limestone Coast Area Consultative Committee, advising the Australian Government on local economic development issues for 7 years, and inaugural member of the Greater Green Triangle Economic Development Board for 5 years. A steering committee member of the Limestone Coast ACC that established the Stand Like Stone Foundation.

Served 8 years as a Board Member and Chairman of the Board of Mainstreet Community Theatre Company, 6 years as a Board Member and Chairman of Lifeline South East.

Life membership of Apex Australia with 19 years of service, serving 3 years as the SA/NT Board District Governor and Citizenship Director. Convener of Apex National Service project to support the Royal Flying Doctor Service.



Director - Treasurer - Greg Eden

Director since November 2013

Born & raised and still live in Port Lincoln. Accountant for most of my career and in more recent times Financial Planner. I will retire from the business at the end of this year. Past community involvements include Councillor with City of Port Lincoln; President of Port Lincoln Tennis Association and Port Lincoln Squash Club; Chairman of Port Lincoln Leisure Centre and Port Lincoln Hospital; Treasurer of Port Lincoln Soccer Association, Tasman Football Club and Lifeline; Treasurer and Board Member of State Council of the National Institute of Accountants; Director of Port Lincoln Bendigo Bank.



Director - Marie Lally AM

Director since October 2009

I was a primary producer in the Lock, Kopi, and Warramboe districts for almost 40 years, before retiring to Tumby Bay in 2007. Roles on boards and panels over the years include the SA Arts Council for Eyre Peninsula; the Lock Health and Welfare Community Board; the SA Country Women's Association becoming State and later National President serving from 2000-2003; Member of the Rural Women's Advisory Council to the Deputy Prime Minister; Chaired the National Rural Health Alliance Conference in 2013; Member of the Lower Eyre Health Advisory Council and the Tumby Bay Hospital and Uringa Auxiliary. In 2012 was a director on the board of Australian Year of the Farmer Ltd.

Awarded Citizen of the Year for the Elliston District Council in 1998; the Centenary Medal of Federation of Australia in 2003, for outstanding service to women in Rural Australia, and in 2004 appointed a Member in the General Division of the Order of Australia, AM.



Director - Jeff Poole

Director since March 2012

Owned and operated a Landscaping and Gardening business and Computer and IT business in the Port Lincoln area for 15 years. Until 2012, I was employed by TafeSA as a Lecturer in the Aquaculture sub-program of Primary and Allied Industries Program. A volunteer member of the SA Country Fire Service serving as 1st Lieutenant for 20 years, Administration Officer Training Officer, Communication Officer also at Brigade level and roles at Group level.

A Justice of the Peace since 1986 and has a Science Degree in Earth Science (Geology). Since December 2012 a contract geologist, Member of the Australian Institute of Mining and Metallurgy (MAusIMM) and appointed December 2012 as a Knight of the Order of St Joachim (KJ).



Director – Megan Hiller / Pobke

Director since February 2013

Born and raised in Adelaide. After graduation with Degree in Speech Pathology moved to Whyalla and worked at the hospital for 2 years. During this time travelled all over the Eyre Peninsula. Returned to Adelaide to work in more specialised roles, before moving back to the Eyre Peninsula. For past three years have lived and worked in Port Lincoln. I am involved in Wanilla Netball Club. I am involved in YPW (Young Professionals Whyalla) and a member of YTAP (Young Tradespeople and Professionals in Port Lincoln).

These groups focus on supporting new people to the Eyre Peninsula to ensure we are building and retaining a skilled workforce for the future of the region.



Director - Dr. Janene Piip

Director since April 2013

Janene Piip is a facilitator of business, community and social capability projects, an experienced workforce development researcher and has most recently been involved with a large scale workforce development project funded by the CRC for Rail Innovation. The project was conducted in the nine Australian rail industry organisations focussing on issues of leadership and management, mentoring, coaching and career development in rail.

She has recently undertaken her PhD in Education by research, investigating issues of leadership talent management and workforce productivity in rail organisations. Janene has interest in philanthropy, funding and empowering people to solve local issues. She is an Eyre Peninsula resident on the family farm at Warratta, north of Tumbly Bay.



Director – Garry Downey

Director since November 2013

I am currently employed with NGO Eyre Futures Inc. as Mentoring EP Regional Coordinator, and Coordinator of the Wheels in Motion Program in Port Lincoln and Whyalla. I have facilitated Mentoring EP as a multi award winning youth mentoring program in Port Lincoln and expanding this into Cleve, Ceduna, Streaky Bay and Whyalla. 18 years with the Commonwealth Bank in SA and WA. I was a Pizza Haven franchisee in Brisbane for 7 years before returning to Port Lincoln. I have umpired for the Port Lincoln Football League since 2005. Umpire coach since 2006 and past secretary of the Port Lincoln Football League.



Treasurer - Glenn Karutz *Director since November 2008*
Retired at 2012/13 AGM



Secretary – Wendy Holman *Director since February 2010*
Retired at 2012/13 AGM



Director and Public Officer - Liz Penfold *Director since March 2012*
Resigned April 2014



STATEMENT OF DECLARATION

2013/14

The Board of the Eyre Peninsula Community Foundation Inc [EPCF] declares the following in accordance with the Associations Incorporation Act 1985 [Act]:

- [1] The accounts present fairly the results of the operations of the EPCF for the 2013/14 financial year and the state of affairs of the EPCF as at the end of the 2013/14 financial year.
- [2] The Board has reasonable grounds to believe that the EPCF will be able to pay its debts as, and when, they fall due.
- [3] That no Board Member of the EPCF or a firm of which any Board Member is a member or a body corporate in which the Board Member has a substantial financial interest has received or become entitled to receive a benefit as a result of a contract between the Board Member, firm or body corporate and the EPCF.
- [4] That during the 2013/14 financial year no Board Member of the EPCF has received directly or indirectly from the RDAWEP any payment or other benefit of a pecuniary value, aside from meeting and travel allowances and honorariums where appropriate, as set out below.

NAME	MEETING/TRAVEL ALLOWANCE \$	HONORARIUM \$
Kamron Clark Chairperson	0	0
Steve Errock Deputy Chairperson	0	0
Glen Karutz Treasurer till 2013 AGM	0	0
Greg Eden Treasurer from 2013 AGM	0	0
Wendy Holman Secretary till 2013 AGM	0	0
Garry Downey	0	0
Marie Lally AM	0	0
Jeff Poole	0	0
Liz Penfold Public Officer till May 2014	0	0
Megan Hiller/Pobke	0	0
Dr. Janene Piip	0	0

Signed: _____

Kamron Clark – CHAIRMAN

Date: 23/11/14

Susan Hooker – Administration Officer

23/11/14



NAMED FUNDS



The Rotary Club of Port Lincoln established the Port Lincoln Rotary Fire Infrastructure Named fund with a contribution of \$25,000 in March 2012. This is to support a whole of region disaster response or preparedness associated with bushfire.



The Cummins Community Future Fund was established by the Cummins District Financial Service Ltd with a contribution of \$25,000 in June 2012. Contributions of \$15,000 in June 2013, and \$10,000 in June 2014.

The EP Home Hospice Fund was established in 2013 with initial funding support from Mike Leech and this has now has funds of \$150,000 +

The Eyre Peninsula Community Foundation makes it easy for organisations, individuals or families to support community projects in the EP region by establishing a Named Fund.

A donation is invested with other trust funds but grants made from the donation are acknowledged as being made from the Named Fund. The original donation is never spent, but keeps on giving to the community long after the money or asset was donated.

A Named Fund is ideally suited to an individual, family, or business wishing to provide support to a range of charities and community groups across Eyre Peninsula, to leave an ongoing legacy to the community, or to honour a family member, friend or outstanding citizen. They are an alternative to Private Ancillary Funds (PAF) offering some very real benefits to the donor.

In a Named Fund -

- Funds are referenced and acknowledged in the name specified by the donor. This can be an individual, partners, family names, a business name or in memory of someone.
- The fund is named from the outset, although the initial minimum contribution can be made over a period of years.*
- The donor can participate in the fund as little or as much as they desire.
- Ongoing contributions, whilst not essential, are recommended at least for a few years.
- Donations to the fund are tax deductible where required**
- Named Fund donors are able to be involved in presenting grants from the fund if they wish
- The fund continues into perpetuity, even after the donor's passing.
- Donors may indicate a preference that a particular group or type of eligible project is to benefit from its donation.

By establishing a Named Fund with the Eyre Peninsula Community Foundation donors are ensuring that the local community will receive perpetuity grants from their fund, rather than a once off donation. We are happy to discuss this or any other options with you, confidentially and totally obligation free.

* The minimum contribution is an initial donation of \$10,000 growing to \$50,000 over five years.

** Where tax deductible gifts are received, conditions can apply limiting certain grant options

BOOK BAZAAR REPORT 2013/14

The Eyre Peninsula Community Foundation's charity bookshop E.P. Book Bazaar is at 17 Napoleon Street Port Lincoln. The Book Bazaar accepts donations of books, in good clean condition, DVD's, CDs, LP's, games and puzzles for resale. Local Eyre Peninsula published authors books are also for sale at the Book Bazaar.

The Book Bazaar has a Meeting Room that is available for hire. Community and Business groups have booked the Book Bazaar Meeting Room in 2013/14. Eyre Writers; Port Lincoln Sing Australia; Bridge Club; Port Lincoln Rotary Board; VET; Bereaved through Suicide; Bendigo Bank for staff training; Cancer Care Support; Isagenex; Port Lincoln Little Athletics; Mindfulness Mediation Workshops; Passionis Productions; Book Bazaar Volunteers and EPCF Board and Board members

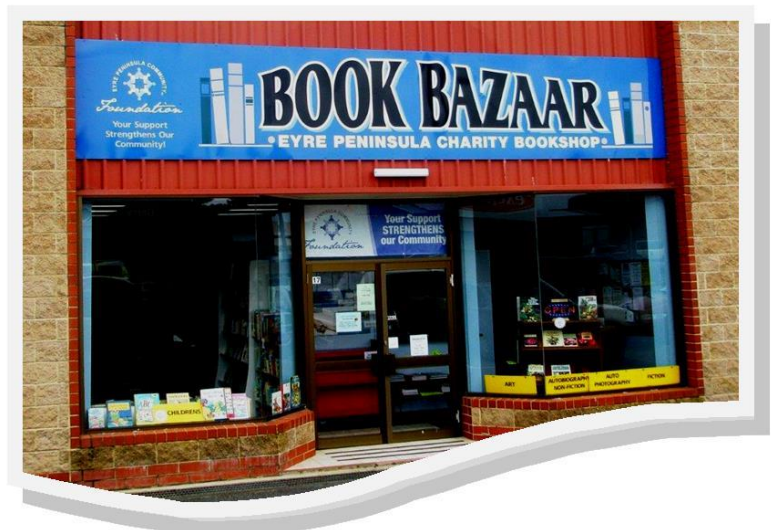
The funds raised at the Book Bazaar go back into the Eyre Peninsula community. Profits from the first six months went to the planned Home Hospice Service Trial, helping it reach its \$100,000 funding goal. This significant amount is a huge achievement for the hard working volunteers and the shops instigator Liz Penfold. Future profits will be shared with other local causes supported by the Eyre Peninsula Community Foundation as well as the Home Hospice Fund.

Locals and visitors travelling through Port Lincoln from all around Australia and overseas have complemented the Book Bazaar. The volunteers have wonderful book knowledge, love books and enjoy sharing their book addiction. The team of volunteers make the Book Bazaar so special. Thanks to everyone who volunteered at the Book Bazaar in 2013/14. Extra thanks to Mary Gudzenovs, the 1st Volunteer Coordinator for the Book Bazaar. Mary resigned in April 2014 to continue her own writing and publishing commitments.

Do you have time to volunteer? If you enjoying being a team member, volunteers with great book knowledge are needed at the Book Bazaar on the weekly eleven shift roster.

Susan Hooker

***Book Bazaar Volunteer
Coordinator since May 2014***



BOOK BAZAAR

OPENING TIMES

Monday to Friday 10.00AM to 5.00PM

Saturday 10.00AM to 1.00PM

Closed Sunday & Public Holidays—Unless Advertised

Tel: (08) 8682 4363

17 Napoleon Street Port Lincoln

PARTNERSHIPS & PROJECTS

 <p>Regional Development Australia WHYALLA & EYRE PENINSULA INC.</p>	 <p>Bendigo Bank</p>	 <p>bp</p>
 <p>ROTARY INTERNATIONAL</p>	<p>Lower Eyre Peninsula YTAP Young Tradespeople & Professionals</p>	 <p>magic 89.9 THE HIT MUSIC STATION</p>
<p>Beyond Bank AUSTRALIA</p>	 <p>LIONS INTERNATIONAL</p>	<p>EYRE PENINSULA 765-5CC</p>
 <p>Sarin Group</p>	 <p>Kemp real estate</p>	 <p>Keith Daniels Homes</p>
 <p>momentum design</p>	 <p>EP GRAIN</p>	 <p>BOOK BAZAAR EYRE PENINSULA CHARITY BOOKSHOP</p>

CAREERS IN THE REGION

EPCF AND YTAP BUILD BRIGHT FUTURES FOR LOCAL YOUTH

Attracting and retaining young professionals on the Eyre Peninsula has become a goal for several of the regions community support networking professional groups. The Eyre Peninsula Community Foundation will be working with local businesses and the Young Tradespeople and Professionals Lower Eyre Peninsula Group to show high school students that the region offers careers that are as exciting and rewarding as bigger cities.

The EPCF are planning organised field trips into businesses to show them all the opportunities the region offers. YTAP has donated the money raised from its Charity Ball in October 2013 to help cover the costs of the field trips. The foundation is working with schools in Tumby Bay, Cummins and Port Neill.

The EPCF want to encourage the idea that even if you need to go to Adelaide or further afield for tertiary studies, you can come back to where you will have great career opportunities and be close to your friends and family.



From left: YTAP Committee Tijana Harding and from EPCF Board Director Megan Hiller, Chairman Kamron Clark and Deputy Chairman Steve Errock

BACK TO SCHOOL VOUCHER PROGRAM

The Eyre Peninsula Community Foundation in conjunction with the Foundation for Rural and Regional Renewal (FRRR) and the Sydney Myer Foundation has distributed \$10,000 Back to School Vouchers to families on the Eyre Peninsula. Each voucher was a Target Card; value \$50.00, which assists families in need to be able to purchase items for their school aged children to help prepare them for the new school year. Vouchers are commonly used by families to buy clothing, footwear, school bags, stationary items and other equipment student's use at school.

Eyre Peninsula Community Foundation Deputy Chairman, Steve Errock, said the vouchers were very much appreciated by both families receiving them and the School Principals who assisted the Foundation with distribution in their local area. "Without the support of our region's School Principals, this distribution would not be possible. I commend them for their support."

"This year 200 vouchers were distributed across Eyre Peninsula through 26 schools. The Foundation will be looking to increase the number of vouchers available to students and families in years to come by generating income from the region. The Sydney FRRR and Sydney Myer Foundation will provide the Eyre Peninsula Community Foundation with 2 additional \$50.00 vouchers for every \$50.00 we can raise in our local communities."

"We are encouraging schools and other community groups to take on a fundraiser to help achieve our goal of increasing the number of students we can assist through this program. With the EPCF, the community has the option of their charitable donations always being used to support our own local communities and staying in our region. Like the Back to School Program the Foundation can also source outside funding to support our region in many ways. I believe this is a major incentive to support our Foundation."

\$1,000 CHAMPIONS CHALLENGE FOR THE HOME HOSPICE

**"BE A CHAMPION, MEET THE HOME HOSPICE CHALLENGE"
1,000 DONATIONS OF \$1,000**

In association with local Eyre Peninsula radio station 765-5CC and Magic 89.9



Tony McKessar, President of the Yallunda Flat A & H Society Inc. presented a cheque to EPCF Chairman Kamron Clark of \$1,000 for the Home Hospice Fund at the Book Bazaar in June 2014

BP FLOW THROUGH FUNDS

Recipients of BP flow through funds for 2013/14

A total of \$15,700 was disseminated to 6 projects identified in Port Lincoln and Ceduna. Fuel vouchers valued at \$15,000 were distributed. Recipients were the Lower Eyre Red Cross Community Transport Service (\$7,000), Community House Port Lincoln (\$1,000), EPCF (\$2,000), Far West Football League (\$1,000), and Ceduna Red Cross Community Transport Service (\$4,000).



Sarah Strivens-Coupe in Ceduna with the areas new Patient Transport vehicle in 2013



Design samples for EPCF from Sign FX

GRANTS

Wheels in Motion

This supported a pilot programme for disadvantaged learner drivers in Pt Lincoln and Whyalla. Provides access to a vehicle to cover hours needed to gain P licence and improve employment opportunities. Over 200 in each community will benefit. Port Lincoln Bendigo Bank has helped with a shared car to use for this programme.



Catherine Higgins (in car); Jill Coates, Manager Eyre Futures Inc; Allen Argent, Driver Mentor and Peter Treloar, Member for Flinders

Port Neill Progress Association

Outdoor Fitness Track Programme - is a small community project to place outdoor equipment on the Pt Neill foreshore to be able to be used by everyone.



Port Neill Progress Association's Alison Spiers testing out new sit up rack in March 2014

SLEAFORD BAY FIRE

This poster was designed to acknowledge the wonderful assistance and generosity of the Eyre Peninsula community and service volunteers who helped fight this fire.

A “thank you day” to the service volunteers was held on the foreshore in Port Lincoln on Sunday 18th May organised by the Port Lincoln Rotary Club and Port Lincoln Community Bank.

EYRE PENINSULA COMMUNITY
Foundation

Your support strengthens our community

Following the Sleaford Bay Bushfires, the Eyre Peninsula Disaster Fund granted \$11,000 to affected local residents.

The foundation provides support to EP people in their greatest time of need. Using systems developed after black Tuesday, the foundation can accept donations and distribute relief in a measured and effective manner.
Contact us today to find out how you can support our community.
www.epcf.com.au

Beyond Bank
AUSTRALIA

EP
GRAIN

899
765-5CC

COMMUNITY FOUNDATION FORUM

COMMUNITY FOUNDATION FORUM - Philanthropy Australia and the Foundation for Rural and Regional Renewal once again coordinated and funded the annual Community Foundation Forum held in the Barossa in September 2013. The Forum attracted registrations from Community Foundations across Australia and Australian and international presenters. EPCF Director Liz Penfold attended. Liz Penfold talked about the setting up of the EP Book Bazaar and raising funds for the Home Hospice Trial.

ACNC

AUSTRALIAN CHARITIES & NOT FOR PROFIT COMMISSION

The Federal Government has established the Australian Charities and Not-for-Profit Commission. All Community Foundations including the Eyre Peninsula Community Foundation report annually to the Commission.

The Eyre Peninsula Community Foundation
belongs to the people of Eyre Peninsula.

It is your LOCAL Community Foundation.

“By donating to the Eyre Peninsula Community Foundation you will be keeping your donation LOCAL for LOCAL benefit.”

How YOU Can Help Make a Long Term Difference

“GIVE WHERE YOU LIVE”

The Eyre Peninsula Community Foundation encourages individuals and corporate donors to make donations to the Foundation so that the capital they donate is retained in the Eyre Peninsula region and the income is used to meet the needs of the local communities.

Become a Donor

The Foundation is different from most other charitable organisations. The donation you make becomes the capital and the funds are invested with an emphasis on security and under the guidance of professional advisers. The income earned from investing your donation is distributed to the Eyre Peninsula community, and will continue to generate an income for distribution forever.

The Foundation is available for donors who wish to “GIVE WHERE YOU LIVE” and assist charitable organisations and projects with no entry or establishment cost.

Gift Options

Donors are encouraged to make their gifts in a number of ways depending on their aims:

- **Unrestricted or Discretionary Gifts** – able to be used by EPCF to make a wide range of charitable purpose grants
- **Named Funds** – can carry the name of the donor or the donor’s family. The name may honour someone or preserve the memory of a family member, friend, pioneer or outstanding citizen
- **Bequests** – Make a bequest to EPCF in your will. It can be acknowledged or anonymous
- **Workplace Giving** – simple and effective way for business and employees to engage with the community and make an ongoing valuable contribution.

If you want to donate or require more information check out the website www.epcf.com.au or email admin@epcf.com.au



EYRE PENINSULA COMMUNITY FOUNDATION

TREASURER'S REPORT 2013/14

The following summarises the financial operations of the Foundation for the year.

At the start of the financial year the Foundation had a total of \$311,889 in its three trust funds.

At the end of June 2014 the capital had grown to \$461,021

The main contributors to the increase were –

• Book Bazaar profit	43,781
• BP Ltd (fuel vouchers)	15,750
• Port Lincoln Bendigo Bank	50,000
• Cummins Bendigo Bank	35,000
• YTAP Ball proceeds	8,055
• Sue Chase Foundation	2,000
• Port Lincoln Lions Club	2,100
• Yallunda Flat A & H Society	1,000
• Whyalla Council	1,000

Grants and Flow Through Funds distributed through our community during the year were –

• Various individuals affected by the Sleaford Fire	10,000
• Port Neill Progress Association	1,000
• Eyre Futures	1,000
• Community House	1,000
• Far West Football League	1,000

Book Bazaar

As is obvious from the table above this has been a major contributor of funds for the Foundation, thanks to the tireless efforts of Liz and Geoff Penfold in getting it going and to the many volunteers who give their time to run it.

Home Hospice

There is a separate fund established for this and at the end of June the fund balance was \$154,660. Hopefully the Foundation will be able to release money from this fund soon. The Penfolds are working on behalf of the Foundation to establish an agency arrangement to enable the service to start and when all is in place the Foundation will be able to start funding it.

Sub-funds

The Foundation has three sub-funds as follows –

• Cummins Community Future Fund	50,912
• Port Lincoln Rotary Disaster Fund	27,037
• EP Home Hospice Fund	154,660

Greg Eden
Treasurer