



# **EYRE PENINSULA COMMUNITY FOUNDATION**

## **Annual Report 2014/2015**

***“YOUR SUPPORT STRENGTHENS OUR COMMUNITY”***

[www.epcf.com.au](http://www.epcf.com.au) or [admin@epcf.com.au](mailto:admin@epcf.com.au)

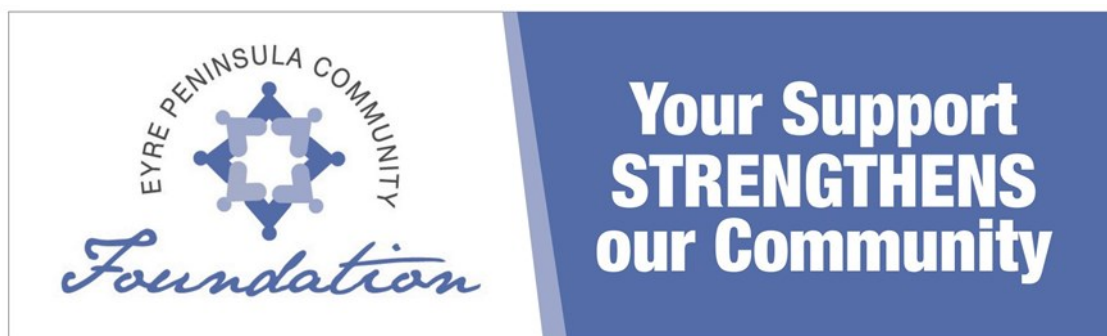


## **Our Mission:**

The Eyre Peninsula Community Foundation enables the people of the Eyre Peninsula to proactively contribute to the long term benefit of our region by:

- Building community endowment
- Addressing local needs through charitable grant making
- Encouraging philanthropy

“By 2017 the Eyre Peninsula Community Foundation is the Premier Philanthropic Organisation on the Eyre Peninsula with a public fund of over \$3 million”

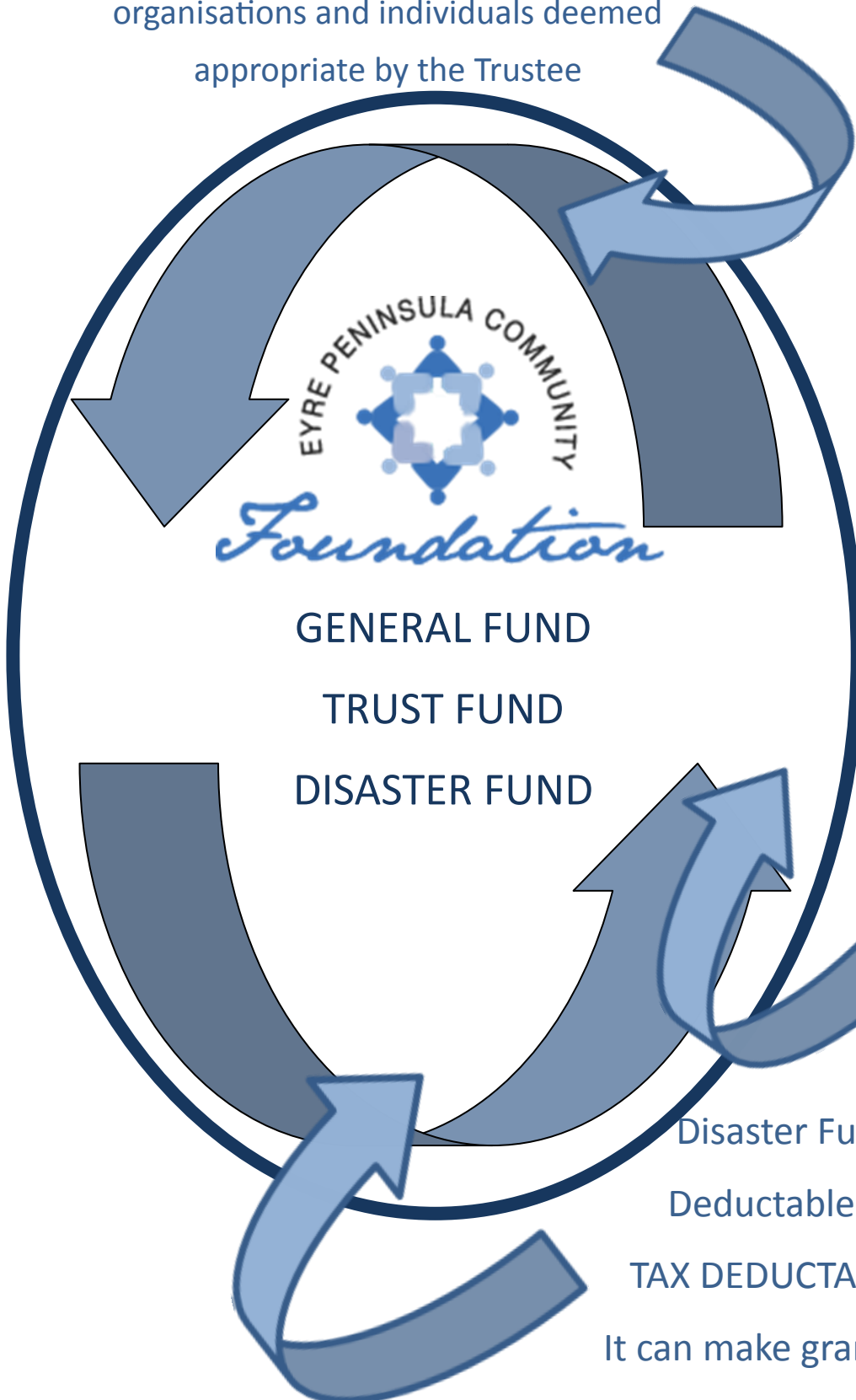


General Fund is a "TCC" Tax Concession Charity

NON TAX DEDUCTABLE DONATIONS

It holds money for specific "Theme"  
& "Named" Funds.

It can make grants to DGR's and other  
organisations and individuals deemed  
appropriate by the Trustee



Trust Fund is a  
"DGR"

Deductable Gift  
Recipient

TAX DEDUCTABLE  
DONATIONS

It holds money for  
specific "Theme" &  
"Named" Funds

It can make grants  
only to other DGR's

Disaster Fund is a "DGR"

Deductable Gift Recipient

TAX DEDUCTABLE DONATIONS

It can make grants to other DGR's

& individuals in necessitous circumstances



## CHAIRMAN'S REPORT 2014/15

It has been an honour to be the chairman of the Eyre Peninsula Community Foundation for another year. The board have been fantastic and I thank them for their support, guidance and dedication. We said good bye to Steve Errock and I would like to thank him for his support as deputy chairman and publicity officer. On behalf of the board I thank him for his service and friendship and wish him and wife Judy all the best in retirement.

We have welcomed Peter Knife to the board and he is already making a positive contribution joining with Fran Solly on a publicity sub-committee and looking after the foundation website. We also gained a new ambassador in Charlotte Pobke and we congratulate Megan and Adrian on her safe arrival.

Susan Hooker has been a wonderful support to me and the board and a tireless worker for the foundation. I can't thank Susan enough and Susan really went above and beyond in the coordination of the short documentary. Susan has also successfully applied for grants for the foundation with recent confirmation of a \$5000 grant from Morialta Trust to support our Back to School Voucher program. Thank you Susan for all your efforts.

I would also like to thank Dion Dorwood and the staff at the Regional Development Whyalla and Eyre Peninsula office in Port Lincoln with their ongoing generous support and provision of workspace and resources for Susan.

The Book Bazaar continues to be a wonderful success and we are very fortunate to have an army of passionate and dedicated volunteers. The Book Bazaar always looks immaculate and the atmosphere warm and welcoming. We continuously receive positive feedback about customers shopping experience. This culminated in the Book Bazaar being nominated for an award at the Port Lincoln Chamber of Commerce award dinner in late 2015 and the volunteers should feel very proud of their recognition.

This year we held our first board meeting in Whyalla which was very successful and well supported by the board. Careers in the Region program continued this year with the Cummins Area School in December 2014 and Tumbly Bay School taking part later in 2015. We continue to distribute Back to School vouchers, administer BP Grants and carry out two EPCF Grant Rounds for the year. The foundation also completed the diversification of our investments with our first share placement. This would not have been possible without the efforts of past foundation chairman and Treasurer Glen Karutz, current Treasurer Greg Eden and RSM Bird Cameron.

This will be my last report as chairman as I am not seeking re election and will stand down from the board. It has been an honour and a privilege to serve and I hope I have helped guide the foundation towards becoming the philanthropic organization of choice for the EP. There is much work still to be done and the surface barely scratched on the potential of this wonderful organisation. I thank all the directors and administration staff both past and present and for their support and friendship. I will always be passionate supporter of the foundation and wish the new board and chairperson every success.

**Kamron Clark**

**Chairman**

## **BOARD OF DIRECTORS 2014/15**



***Chairman - Kamron Clark***

***Director since 17 November 2011***

From 2005 – 2014, I owned the Port Lincoln Budget Rent a Car franchise, growing the business from 8 vehicles to a fleet of 30 with 2 employees. I have been an active member of the Port Lincoln Apex Club from 2002 to 2009 holding positions of Club Secretary, Treasurer and President. In 2007 I held the position of Convention Chairman on the Apex National Board and we held the national convention in Port Lincoln in 2007 hosting 200 Apexians and their families. I was a member of the EP Bushfire Charitable Funds Committee whose responsibility was to disseminate funds both small and large to individual and groups across the fire affected area through a methodical and accountable process. Our community across the region is important to me. It pleases me to be able to contribute through the Foundation by way of being a Board Member and to raise the profile and value of the future benefits of the Foundation to the community as it evolves.



***Director - Treasurer - Greg Eden***

***Director since November 2013***

Born and raised in Port Lincoln, I have been an accountant for most of my career and in recent times, a financial planner. Past community involvements include as a Councillor with the City of Port Lincoln; President of the Port Lincoln Tennis Association and Port Lincoln Squash Club; Chairman of Port Lincoln Leisure Centre and Port Lincoln Hospital; Treasurer of Port Lincoln Soccer Association; Tasman Football Club; Lifeline; Treasurer and Board Member of State Council of the National Institute of Accountants; Director of Port Lincoln Bendigo Bank.



***Director - Marie Lally AM***

***Director since October 2009***

Marie with her husband Kevin have farmed their properties in the Lock , Kopi, Warrambo districts for almost 40 years before retiring to Tumby Bay in 2007. Marie's dedication to her community and the agriculture industry is evident in the long list of roles she has had on boards and panels over the years. A number of the panels and boards she has served on are – the SA Arts Council for the EP Region; the Lock Health and Welfare Community Board; the South Australian Country Women's Association going on to be the State President and then later the National President serving from 2000-2003; she was invited to be a member of the Rural Women's advisory Council to the Deputy Prime Minister. She was the SA representative on the National Rural Health Alliance Friends Advisory Committee and Chair of the National Conference held in SA in 2013; Member of the Lower Eyre Health Advisory Council and an active member of the Tumby Bay Hospital and Uringa Auxiliary. In 2008 Marie became a director on the Australian Year of the Farmer Ltd.

Marie's achievements are not limited to – being awarded Citizen of the Year for the Elliston District Council in 1998; awarded the Centenary Medal of Federation of Australia in 2003, for outstanding service to women in Rural Australia; in 2004 Marie was appointed a Member in the General Division of the Order of Australia. AM.



***Director – Megan Pobke***

***Director since February 2013***

Born and raised in Adelaide. After graduation with Degree in Speech Pathology moved to Whyalla and worked at the hospital for 2 years. During this time travelled all over the Eyre Peninsula and then returned to Adelaide to work in more specialised roles, before moving back to the Eyre Peninsula. For past three years have lived and worked in Port Lincoln. I am involved in Wanilla Netball Club. I am involved in YPW (Young Professionals Whyalla) and a member of YTAP (Young Tradespeople and Professionals in Port Lincoln).

These groups focus on supporting new people to the Eyre Peninsula to ensure we are building and retaining a skilled workforce for the future of the region.



***Director - Dr. Janene Piip***

***Director since April 2013***

Janene Piip is a facilitator of business, community and social capability projects, an experienced workforce development researcher and has most recently been involved with a large scale workforce development project funded by the CRC for Rail Innovation. The project was conducted in the nine Australian rail industry organisations focussing on issues of leadership and management, mentoring, coaching and career development in rail.

She has recently undertaken her PhD in Education by research, investigating issues of leadership talent management and workforce productivity in rail organisations. Janene has interest in philanthropy, funding and empowering people to solve local issues. She is an Eyre Peninsula resident on the family farm at Warratta, north of Tumby Bay.



***Director – Garry Downey***

***Director since November 2013***

I am currently employed with the NGO Eyre Futures Inc. as Mentoring EP Regional Coordinator, and Coordinator of the Wheels in Motion Program in Port Lincoln and Whyalla. I have facilitated Mentoring EP as a multi award winning youth mentoring program in Port Lincoln and expanding this into Cleve, Ceduna, Streaky Bay and Whyalla. I have 18 years' service with the Commonwealth Bank in SA and WA, and had a Pizza Haven franchise in Brisbane for 7 years. I have umpired for the Port Lincoln Football League since 2005, umpire coach since 2006-2013 and a past secretary for the Port Lincoln Football League Umpires Association.



***Director – Fran Solly***

***Director since November 2014***

Following a career with the South Australian Public Service working first for SA Police and more recently for the Department of Further Education, Employment, Science and Technology and then TAFE SA Fran is semi-retired and following her passion with a Freelance and Event Photography business on Eyre Peninsula. Fran has qualifications in Accounting and Business Management. She has worked at the Executive level in Government as Director of People and Culture. Fran's TAFE SA role was State-wide which gave her the opportunity to visit Regional Centre's and understand the particular issues faced in Regional Communities. As a born and bred Eyre Peninsula resident Fran looks forward to working closely with Eyre Peninsula Communities through the Eyre Peninsula Community Fund. Fran is married to Barry Hockaday and has a daughter Bridget, and three grandchildren. She is a keen ornithologist, sailor and bush walker.



***Director - Jeff Poole***

***Director since March 2012***

***Resigned November 2014***



***Deputy Chairperson- Stephen Errock***

***Director since 28 October 2010***

***Resigned June 2015***





## NAMED FUNDS 2014/15



The Rotary Club of Port Lincoln established the Port Lincoln Rotary Fire Infrastructure Named fund with a contribution of \$25,000 in March 2012. This is to support a whole of region disaster response or preparedness associated with bushfire.



The Cummins Community Future Fund was established by the Cummins District Financial Service Ltd with a contribution of \$25,000 in June 2012. Contributions of \$15,000 in June 2013, and \$10,000 in June 2014.

**The EP Home Hospice Fund was established in 2013 with initial funding support from Mike Leech and this has now has funds of \$169,000 +**

The Eyre Peninsula Community Foundation makes it easy for organisations, individuals or families to support community projects in the EP region by establishing a Named Fund.

A donation is invested with other trust funds but grants made from the donation are acknowledged as being made from the Named Fund. The original donation is never spent, but keeps on giving to the community long after the money or asset was donated.

A Named Fund is ideally suited to an individual, family, or business wishing to provide support to a range of charities and community groups across Eyre Peninsula, to leave an ongoing legacy to the community, or to honour a family member, friend or outstanding citizen. They are an alternative to Private Ancillary Funds (PAF) offering some very real benefits to the donor.

In a Named Fund -

Funds are referenced and acknowledged in the name specified by the donor. This can be an individual, partners, family names, a business name or in memory of someone.

The fund is named from the outset, although the initial minimum contribution can be made over a period of years.\*

The donor can participate in the fund as little or as much as they desire.

Ongoing contributions, whilst not essential, are recommended at least for a few years.

Donations to the fund are tax deductible where required\*\*

Named Fund donors are able to be involved in presenting grants from the fund if they wish

The fund continues into perpetuity, even after the donor's passing.

Donors may indicate a preference that a particular group or type of eligible project is to benefit from its donation.

By establishing a Named Fund with the Eyre Peninsula Community Foundation donors are ensuring that the local community will receive perpetuity grants from their fund, rather than a once off donation. We are happy to discuss this or any other options with you, confidentially and totally obligation free.

\* The minimum contribution is an initial donation of \$10,000 growing to \$50,000 over five years.

\*\* Where tax deductible gifts are received, conditions can apply limiting certain grant options



**Your Support  
STRENGTHENS  
our Community**

## Home Hospice 2014/15



Millie Russell; Hannah Russell; Pip Langford; Jordan Lynch & Lisa Dempsey.



Jeziah Sundqvist working on runner Kazia Kemp

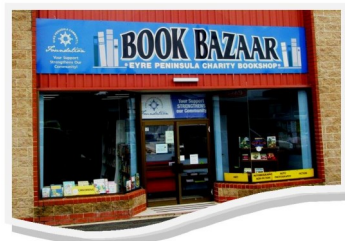
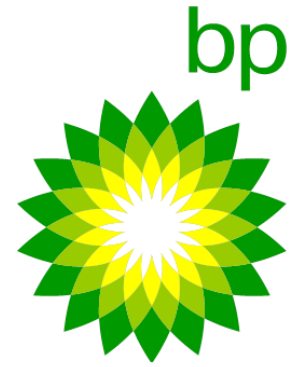


Jordan Lynch & Lisa Dempsey working on participants

*The team from Eyre Sports Physiotherapy raised funds to donate to the Home Hospice Fund by offering their services to the participants at Tunarama and Boston Bay Half Marathon. Many generous corporate, businesses, individuals and EP Book Bazaar donated funds to the Home Hospice Fund. On the 1st of December 2014 a joint trial between the Eyre Peninsula Home Hospice Association and Calvary Community Care began offering an after hours/ overnight care program. This trial will be evaluated and monitored by UniSA. To find out more and for referrals to participate, call Port Lincoln Community Health Service (08) 8683 2211.*

<https://nfp.everydayhero.com/au/eyre-peninsula-community-foundation-inc>

# PARTNERSHIPS & PROJECTS



Connecting rural Australia and philanthropy since 2000

## **BOOK BAZAAR 2014/15**

The Eyre Peninsula Community Foundation's charity bookshop E.P. Book Bazaar is at 17 Napoleon Street Port Lincoln. The Book Bazaar accepts donations of books, in good clean condition, DVD's, CDs, LP's, games and puzzles for resale. Local Eyre Peninsula published authors books are also for sale at the Book Bazaar.

The Book Bazaar has a Meeting Room that is available for hire. Community and Business groups have booked the Book Bazaar Meeting Room in 2014/15. Eyre Writers; Port Lincoln Sing Australia; Rotary Board; Blue Water Raiders; Meals on Wheels; Port Lincoln Arts Council; West Coast Youth & Community Services; Passionis Productions; Book Bazaar Volunteers and EPCF Board and Board members

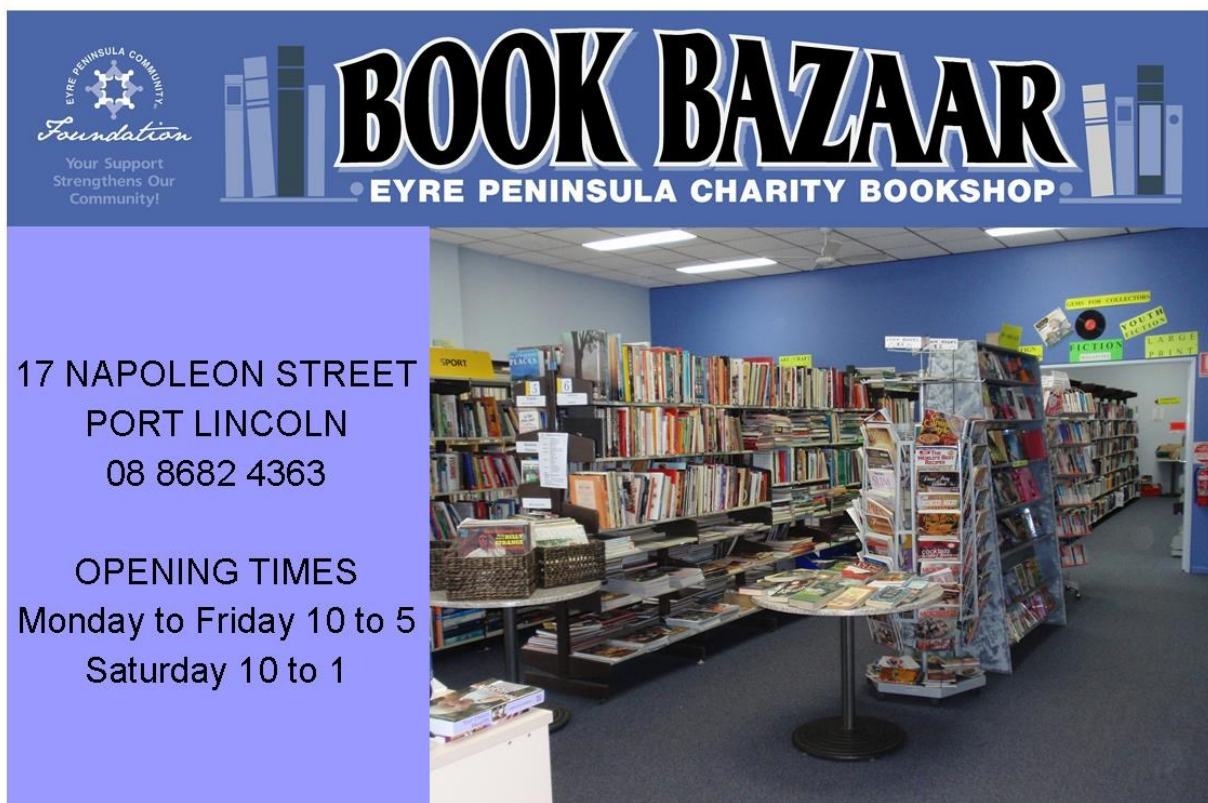
The funds raised at the Book Bazaar go back into the Eyre Peninsula community. Profits from the first six months went to the planned Home Hospice Service Trial, helping it reach its \$100,000 funding goal. This significant amount is a huge achievement for the hard working volunteers and the shops instigator Liz Penfold. Future profits will be shared with other local causes supported by the Eyre Peninsula Community Foundation as well as the Home Hospice Fund.

Locals and visitors travelling through Port Lincoln from all around Australia and overseas have complemented the Book Bazaar. The volunteers have wonderful book knowledge, love books and enjoy sharing their book addiction. The team of volunteers make the Book Bazaar so special.

Thanks to everyone who volunteered at the Book Bazaar in 2014/15.

Thanks to Rob Watson & Staff at Doug Watsons Mensland for assisting the Book Bazaar through 2014/15

Do you have time to volunteer? If you enjoying being a team member, volunteers with great book knowledge are needed at the Book Bazaar on the weekly eleven shift roster.

The image features a blue banner at the top with the text 'BOOK BAZAAR' in large, bold, white letters with a black outline. Below this, it says 'EYRE PENINSULA CHARITY BOOKSHOP'. To the left of the banner is the Eyre Peninsula Community Foundation logo, which includes a stylized map of the region and the text 'Your Support Strengthens Our Community!'. Below the banner is a photograph of the interior of the bookshop, showing rows of bookshelves filled with books, a central display table with more books, and various signs for different sections like 'SPORT', 'FICTION', 'YOUTH', and 'LARGE PRINT'.

**17 NAPOLEON STREET  
PORT LINCOLN  
08 8682 4363**

**OPENING TIMES  
Monday to Friday 10 to 5  
Saturday 10 to 1**

# High Tea with Author Fiona McIntosh

November 2014

The Eyre Peninsula Community Foundation Book Bazaar had arranged with Penguin Books and Meg's Book Shop to bring internationally renowned bestselling Australian Author Fiona McIntosh to Port Lincoln for a High Tea event to speak about her new book *Nightingale* on Monday 3<sup>rd</sup> November at the Port Lincoln Hotel. During this time Fiona spoke about her work as an author, participated in a question and answers session and signed her new book for those present.

Thanks to the wonderful assistance from Kathy Sergejevs; Photographer Steve Sykes; the Book Bazaar Volunteers who sold the tickets and EPCF Director Marie Lally who spoke on behalf of the Eyre Peninsula Community Foundation.



Author Fiona McIntosh & Margie Arnold—Meg's Book Shop



Fiona McIntosh & Marie Lally  
EPCF Director



The Literary High Tea at the Port Lincoln Hotel



# Back to School Vouchers February 2015

The Eyre Peninsula Community Foundation, in conjunction with the Foundation for Rural and Regional Renewal (FRRR); the Sidney Myer Foundation; the Wyatt Foundation and the Morialta Trust has this year distributed \$20,000 of Back to School vouchers to families in Whyalla and Eyre Peninsula. Each voucher is a Target Card for \$50 which helps families in need of assistance to be able to purchase items for their school aged children to assist them starting the new school year.

Vouchers are commonly used by families to buy clothing, footwear, school bags, stationery items and other equipment students' use at school.

Former Eyre Peninsula Community Foundation Deputy Chairperson, Mr. Steve Errock, said the vouchers were appreciated by both families receiving them and the School Principals who assisted the Foundation with distribution.

"Without the support of our region's School Principals, this distribution would not be possible. I commend them for their support."

"This year we have distributed 400 vouchers across 30 schools in Whyalla and Eyre Peninsula."

"In gathering data to assist the Foundation to achieve equitable distribution, we found that there is a much greater need for this assistance than the support we could provide."

"When our data was collated, we found we could only distribute vouchers to about 20% of the students who needed this assistance. The need for this support across Whyalla and Eyre Peninsula is strikingly high," Mr. Errock said. You can assist by following the link at Everyday Hero

<https://nfp.everydayhero.com/au/eyre-peninsula-community-foundation-inc>



EPCF Megan Pobke with Elliston School Trisha Tomlinson & Maree Bourke



EPCF Deputy Chair Stephen Errock & Port Lincoln Junior Primary School Principal Debbie Hemming



EPCF Garry Downey; Morialta Nominees Pty.Ltd. Director Wes Ashman and Wyatt Benevolent Institution Inc. Paul Madden



EPCF Deputy Chair Stephen Errock & Lake Wangary Primary School Principal Vicki Shakes



EPCF Fran Solly at Lincoln Gardens with Hayley Dillon



Howard Coote RDAWEP Indigenous Economic Development Manager & Ceduna Principal Jim Michealany



EPCF Deputy Chair Stephen Errock & Port Lincoln High School Principal Greg Barry



# EPCF In Whyalla

May 2015



EPCF Directors viewing the Whyalla Men's Shed with Shed Coordinator Brian Marshall

The Board of the Eyre Peninsula Community Foundation held a Community Presentation and Board Meeting in Whyalla on Wednesday 6<sup>th</sup> May 2015. The Foundation is keen to help the Whyalla community to understand the purpose and role of the Foundation in supporting the Whyalla and Eyre Peninsula community through philanthropic giving.

The EPCF Board Members were invited to visit the Whyalla Men's Shed who had received a Community Grant from the EPCF in September 2014

The Community Presentation was held at the Regional Development Australia, Whyalla and Eyre Peninsula (RDAWEP) Office. All members of the community, community clubs and organisations, and local businesses were invited to attend this presentation and to meet the Director's of the Community Foundation. The EPCF Board would like to thank the RDAWEP Whyalla & Port Lincoln office and staff for generously assisting this visit.



EPCF Director Steve Errock, Garry Misan, Whyalla Men's Shed; John Hunt & Gillian Harvey, Beyond Bank & Brian Marshall WMS



CWA's Bev Watts, Joan Worby and June Phillips Smith with EPCF Director Marie Lally



EPCF Directors Greg Eden & Garry Downey with Cathy Hutchinson, Advancing Whyalla





# Careers in The Region 2014/15

Year 10 students from Cummins Area School received first hand information on the different types of jobs available in the region as part of the Careers in the Region Program offered through the Eyre Peninsula Community Foundation and its relationships with Young Trades and Professionals and local Eyre Peninsula businesses—the program aims to retain young workers to maintain growth and family connections on the Eyre Peninsula.

This program has enabled students to meet employers and employees who have shared their career stories over 3 days. Two days in Cummins and then the students travelled to Port Lincoln and visited with many employers including Sarin Group and Keith Daniels Homes before going to the Port Lincoln Marine Science Centre for a “speed dating Q&A” with Young Trades and Professionals.

Teacher Diane Fitzgerald said the school wanted to try a different approach in providing career information to the students.” We worked to develop a new program, working with the EPCF and found sponsors and employers to allow us to get behind the scenes.”

<http://www.portlincolntimes.com.au/story/2739818/first-hand-career-knowledge/How/>



Cummins Students at the Port Lincoln Marina



thank you to those who have generously supported our careers week

Cummins District Community Bank Branch    Bendigo Bank

## Flow Through Funds 2014/15

The Eyre Peninsula Community Foundation is helping to distribute community funding donated by energy company BP.

BP provided the Red Cross Eyre Peninsula and Far West Coast Community Passenger Network with \$4,000 each for fuel for their vehicles as well as \$1,000 to Community House, Far West Coast Football League, \$1,500 to Eyre Futures Wheels in Motion and the Eyre Peninsula Community Foundation Projects.

These “Flow Through Funds” from BP will assist Community House Port Lincoln purchase fuel for their community vehicle which helps deliver many projects and assistance to the community.

Eyre Futures have received a grant for the Wheels in Motion vehicle used to support disadvantaged Learner Drivers across the Eyre Peninsula to achieve sufficient driving experience and gain their provisional license

Far West Coast Football League were assisted with travel for players and officials to attend and be part of the Mortlock Shield in Port Lincoln.

Red Cross Transport Network Lower Eyre Peninsula and Far West Coast were given a grant help provide support to the fleet of the Community Passenger Network. This grant which enables the provision of transport for vulnerable, socially isolated and transport disadvantaged people across the Lower, Eastern Eyre Peninsula and Far West Coast

Eyre Futures Jill Coates and EPCF Director Janene Piip

Red Cross LEP Kerry Schubert & EPCF Garry Downey



Renee Preece from BP with Red Cross Far West Coast Claire Collins & Nick Heyne



# Eyre Peninsula Community Foundation

## Small Grants 2014/15

### EPCF GRANT Recipients September 2014

Wanilla Progress Association Inc - Purchase a New Pie Warmer for the Wanilla Hall

Toybox Community Childcare Centre - IT Resources for Young Children Program

Yarredi Services Inc - Equipment for a Children's Wellbeing Program

Whyalla Men's Shed Inc - Upgrade the fire and electrical fixtures for the shed according to the SA Work Health and Safety Act 2012

Port Lincoln Sing Australia - Song Books for Community Program

Youth Opportunities Association Inc - Re-engaging Port Lincoln's Young People Program

### EPCF GRANT RECIPIENTS May 2015

Janet Raleigh and Susanne Wegener Visionary Individuals - Healing Hearts and Minds Project

<http://www.healingheartsandminds.gallery>

Coffin Bay Yacht Club Inc - Backup Generator for Refuge of Last Resort Project

Wanilla Progress Association Inc. - Projector and Screen Project

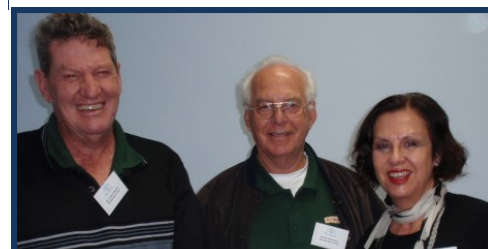
Eyre Futures Incorporated - Mentoring EP Project



Chris Prestage & Jo Clark Youth Opportunities Association with EPCF



Chantelle Sugden, Toybox CC & EPCF



Malcom Roberts & Brian Marshall, Whyalla Men's Shed with EPCF Director Janene Piip

Wade Grey, Coffin Bay Yacht Club; Janet Raleigh, Visionary Individuals; Marion Cox, Wanilla Progress Asc.; EPCF Director Janene Piip; Leanne O'Connor; Wanilla Progress Asc.; Sharon Wait, Eyre Futures Inc.



Sharyn Potts, Yarredi Services & EPCF Director Janene Piip



Anna Van der Hart & Maxine Hage Port Lincoln Sing Australia

Wanilla Progress Association's Heather Pope with the new Pie Warmer that replaced the old one.



The Eyre Peninsula Community Foundation (EPCF) belongs to the people of Eyre Peninsula.

It is your LOCAL Community Foundation.

*“By donating to the Eyre Peninsula Community Foundation you will be keeping your donation LOCAL for LOCAL benefit.”*

**How YOU Can Help Make a Long Term Difference**  
**“Give where you Live”**

The Eyre Peninsula Community Foundation encourages individuals and corporate donors to make donations to the Foundation so that the capital they donate is retained in the Eyre Peninsula region and the income is used to meet the needs of the local communities.

[www.epcf.com.au](http://www.epcf.com.au) or [admin@epcf.com.au](mailto:admin@epcf.com.au)



<https://nfp.everydayhero.com/au/eyre-peninsula-community-foundation-inc>

**Collections for Charitable Purposes**

**Section 6 Licence**

**Licence No: CCP1776**

*Collections for Charitable Purposes Act 1939*

*Section 11(3)*

**Collections for Charitable Purposes**

**Section 7 Licence**

**Licence No: CCP1776**

*Collections for Charitable Purposes Act 1939*

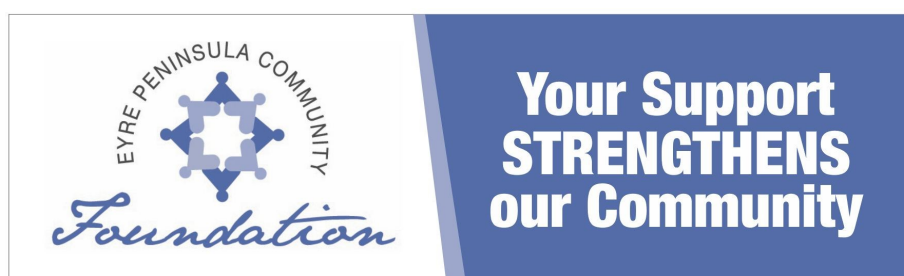
*Section 11(3)*

**ACNC**

**AUSTRALIAN CHARITIES & NOT FOR PROFIT COMMISSION**

The Federal Government has established the Australian Charities and Not-for-Profit Commission. All Community Foundations including the Eyre Peninsula Community Foundation report annually.

[www.epcf.com.au](http://www.epcf.com.au) or [admin@epcf.com.au](mailto:admin@epcf.com.au)



## BECOME A DONOR

The Foundation is different from most other charitable organisations. The donation you make becomes the capital and the funds are invested with an emphasis on security and under the guidance of professional advisers. The income earned from investing your donation is distributed to the Eyre Peninsula community, and will continue to generate an income for distribution forever.

The Foundation is available for donors who wish to “Give where they Live” and assist charitable organisations and projects with no entry or establishment cost.

## GIFT OPTIONS

Donors are encouraged to make their gifts in a number of ways depending on their aims:

**UNRESTRICTED OR DISCRETIONARY GIFTS** – able to be used by EPCF to make a wide range of charitable purpose grants

**NAMED FUNDS** – can carry the name of the donor or the donor’s family. The name may honour someone or preserve the memory of a family member, friend, pioneer or outstanding citizen

A donation is invested with other trust funds but grants made from the donation are acknowledged as being made from the Named Fund. The original donation is never spent, but keeps on giving to the community long after the money or asset was donated.

A Named Fund is ideally suited to an individual, family, or business wishing to provide support to a range of charities and community groups across Eyre Peninsula, to leave an ongoing legacy to the community, or to honour a family member, friend or outstanding citizen. They are an alternative to Private Ancillary Funds (PAF) offering some very real benefits to the donor.

In a Named Fund -

Funds are referenced and acknowledged in the name specified by the donor. This can be an individual, partners, family names, a business name or in memory of someone.

The fund is named from the outset, although the initial minimum contribution can be made over a period of years.\*

The donor can participate in the fund as little or as much as they desire.

Ongoing contributions, whilst not essential, are recommended at least for a few years.

Donations to the fund are tax deductible where required\*\*

Named Fund donors are able to be involved in presenting grants from the fund if they wish

The fund continues into perpetuity, even after the donor’s passing.

Donors may indicate a preference that a particular group or type of eligible project is to benefit from its donation.

By establishing a Named Fund with the Eyre Peninsula Community Foundation donors are ensuring that the local community will receive perpetuity grants from their fund, rather than a once off donation. We are happy to discuss this or any other options with you, confidentially and totally obligation free.

\* *The minimum contribution is an initial donation of \$10,000 growing to \$50,000 over five years.*

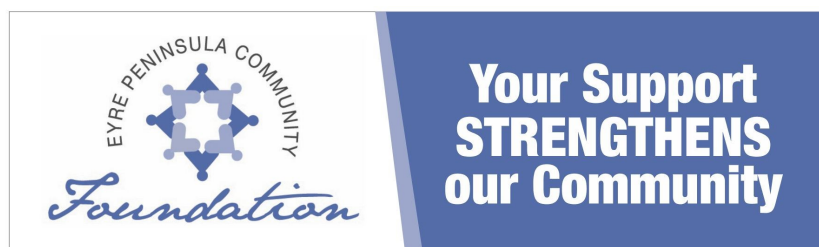
\*\* *Where tax deductible gifts are received, conditions can apply limiting certain grant options*

**BEQUESTS** – Make a bequest to EPCF in your will. It can be acknowledged or anonymous. This would be an enduring gift to the Eyre Peninsula Community Foundation and may be as simple as adding a codicil to your will (please seek advice from your solicitor).

**WORKPLACE GIVING** – simple and effective way for business and employees to engage with the community and make an ongoing valuable contribution.

**BEYOND BANK**— Open a Beyond Bank Community Reward Account and designate your rewards to the Eyre Peninsula Community Foundation

[www.epcf.com.au](http://www.epcf.com.au) or [admin@epcf.com.au](mailto:admin@epcf.com.au)



# **EYRE PENINSULA COMMUNITY FOUNDATION**

## **TREASURER'S REPORT 2014/15**

The following summarises the financial operations of the Eyre Peninsula Community Foundation for the year.

At the start of the financial year the Foundation had a total of \$461,021 in its three trust funds. At the end of June 2015 the capital had grown to \$490,448

The main contributors to the increase were –

Book Bazaar Profit	29,165
BP Ltd (fuel vouchers)	15,750
Port Lincoln Bendigo Bank	50,000
Morialta Trust	5,000
M & M Gardner	2,500
Sue Chase Foundation	2,000
Port Lincoln Lions Club	3,000
Eyre Sports Physio	1,097
CWA	1,000
Unity OP Shop	1,000

Grants distributed through our community during the year totalled \$20,846

### **Sub-Funds**

The Foundation has three sub-funds as follows –

Cummins Community Future Fund	51,243
Port Lincoln Rotary Disaster Fund	27,308
EP Home Hospice Fund	169,075

**Greg Eden**

**Treasurer**